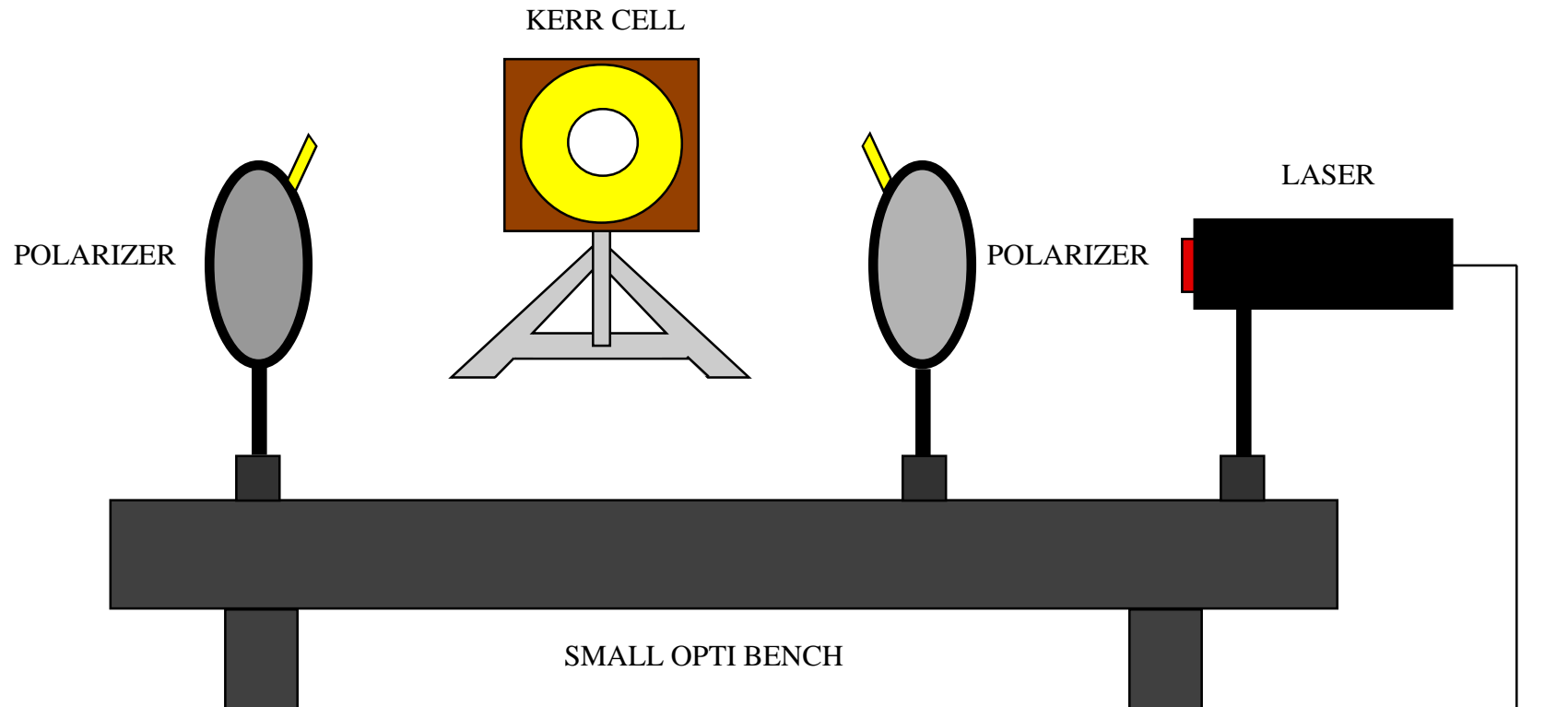


SPECIFIC ROTATION  
6H30.40



ALIGN LASER AND POLARIZERS SO THAT NO LIGHT SHINES THROUGH ONTO THE SCREEN.

PLACE KERR CELL BETWEEN THE TWO POLARIZERS SO THAT THE LASER LIGHT GOES THROUGH THE GLASS.

A SMALL AMOUNT OF LIGHT WILL NOW BE VISIBLE ON THE SCREEN.

REMOVE THE KERR CELL AND THE LIGHT ON THE SCREEN DISAPPEARS.

TURN OFF ALL LIGHTS IN THE LECTURE HALL SO THE LIGHT ON THE SCREEN WILL BE VISIBLE.