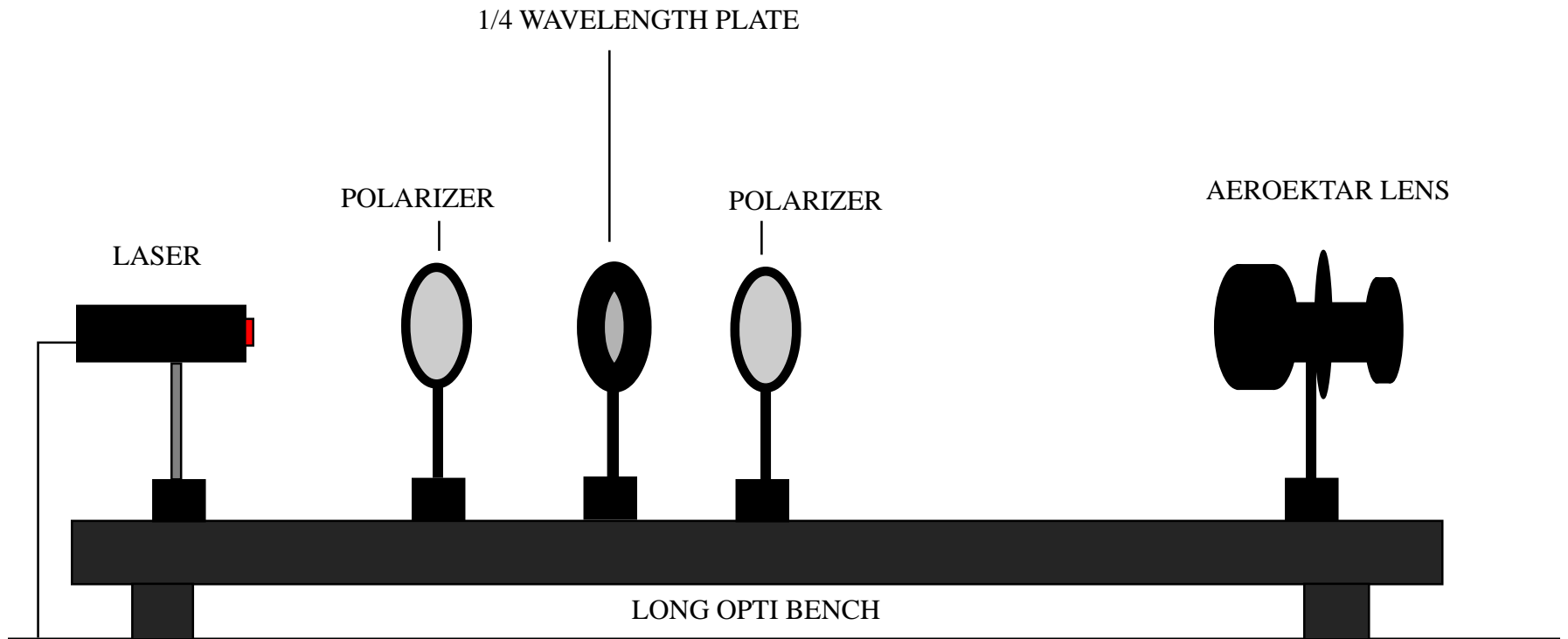


1/4 WAVELENGTH PLATES
6H30.10



DISTANCES: (ALL DISTANCES ARE FROM ONE END OF THE LONG OPTI BENCH)

LASER @ 0 cm

1st POLARIZER @ 31.5 cm

1/4 WAVELENGTH PLATE @ 62.5 CM

2nd POLARIZER @ 93.5 cm

AEROEKTAR LENS @ 125cm

ADJUST POLARIZERS SO THAT NO LASER LIGHT GETS THROUGH THE SECOND POLARIZER WITHOUT THE 1/4 WAVELENGTH PLATE INSERTED. INSTRUCTOR SHOULD PLACE 1/4 WAVELENGTH PLATE INTO HOLDER AFTER IT IS SHOWN THAT NOT LIGHT GETS THROUGH. WHEN PLATE IS INSERTED SOME LASER LIGHT WILL PASS THROUGH THE SECOND POLARIZER. THIS LIGHT SHOULD BE PROJECTED ONTO THE VIDEO SCREEN.