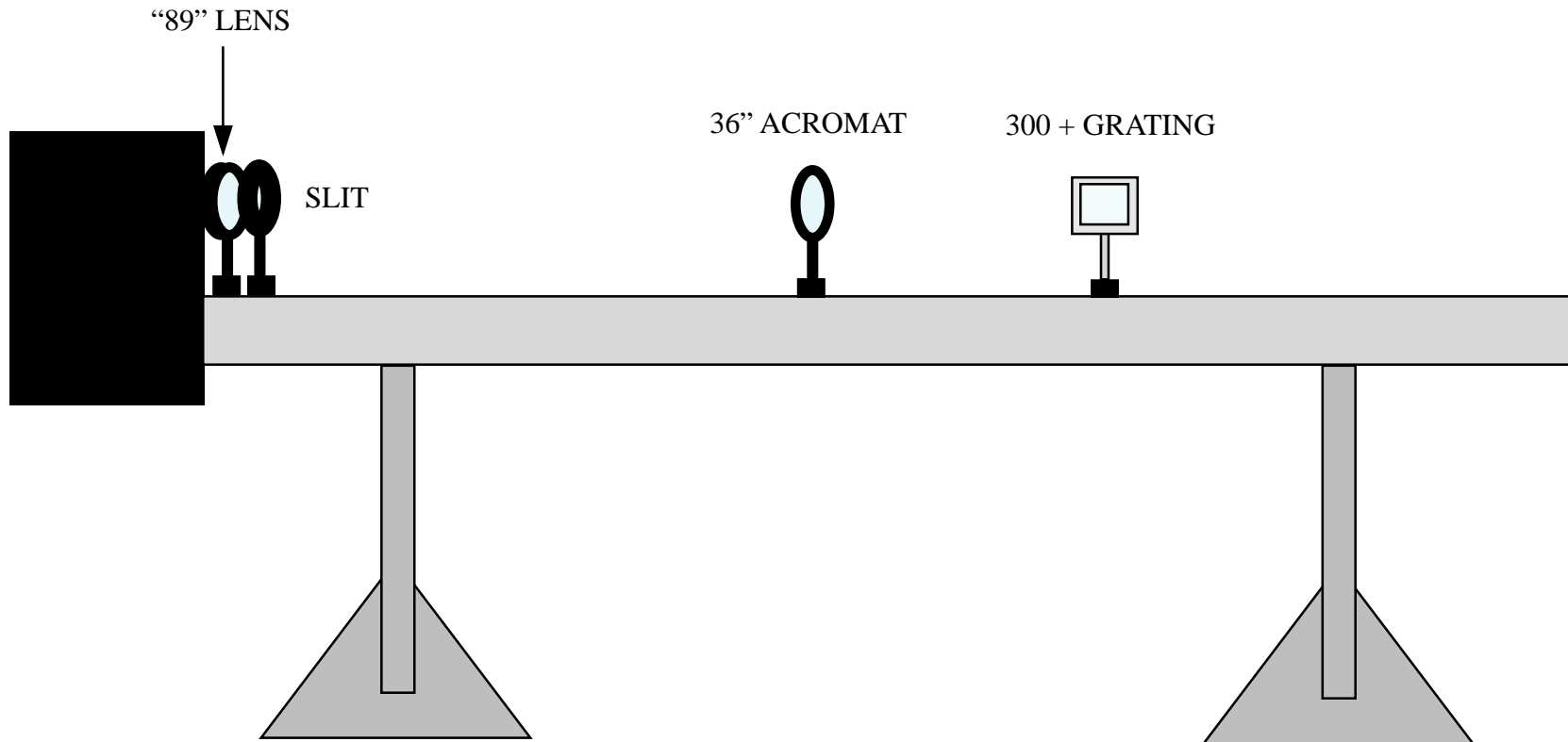


SOLAR SPECTRUM
6A46.20



PLACE FIRST LENS FLUSH AGAINST BLACK BOX.
PLACE SLIT AS CLOSE TO FIRST LENS AS POSSIBLE.
PLACE 36" ACROMAT LENS 92.5 cm FROM SLIT.
PLACE DIFFRACTION GRATIN 35 cm FROM THE ACROMAT LENS.
SPECTRUM WILL SHINE ON THE WEST WALL OF 103.
THE SOUTHERN MOST SPECTRUM IS MOST VISIBLE.
TURN DOWN THE LIGHTS FOR BEST VIEWING.
THESE MEASUREMENTS WERE TAKEN IN FEBRUARY 2001.
THESE NUMBERS WORKED WELL BUT FINAL ADJUSTMENTS WILL NEED TO BE DONE EACH TIME THIS DEMO IS USED.