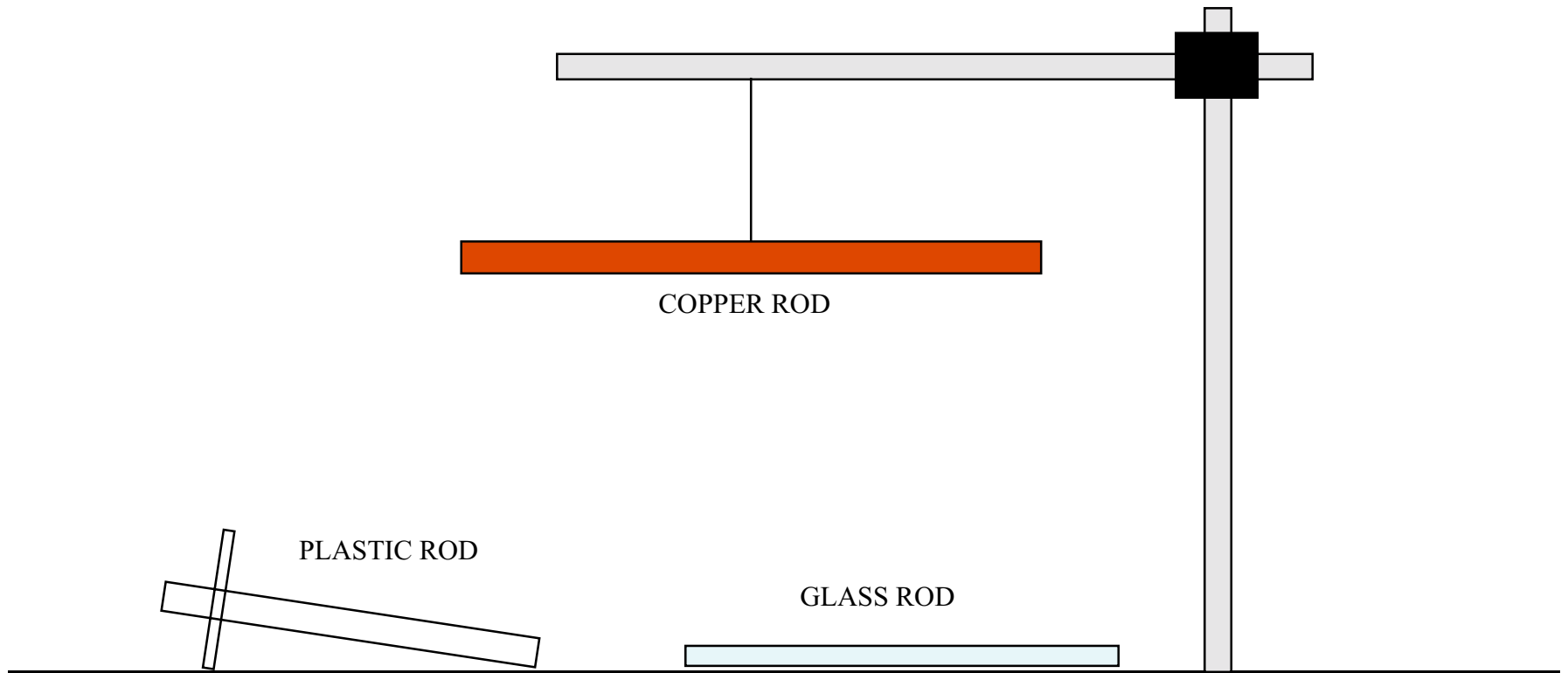


SUSPENDED COPPER ROD
5A20.30



SUSPEND COPPER ROD FROM CROSS BAR BY FISHING LINE.

THE ROD IS ATTRACTED BY THE GLASS ROD AND REPELLED BY THE PLASTIC ROD.

THE COPPER ROD MUST BE CHARGED FOR THIS TO WORK.

RODS ARE CHARGED BY FUR OR SILK.

WORKD BEST ON LOW HUMIDITY DAYS.