

**First Light for the First Station of the Long Wavelength Array  
To be submitted to XXX**

G.B. Taylor<sup>1,2</sup>, S. W. Ellingson<sup>3</sup>, N.E. Kassim<sup>4</sup>, J. Craig<sup>1</sup>, J. Dowell<sup>1</sup>, C. N. Wolfe<sup>3</sup>, J. Hartman<sup>5,6</sup>, T. Clarke<sup>4</sup>, J. Lazio<sup>5</sup>, R. Navarro<sup>5</sup>, P.S. Ray<sup>4</sup>, L.J. Rickard<sup>1</sup>, E. Sigman<sup>5</sup>, M. Sorriano<sup>5</sup>, K. Stovall<sup>7</sup>, S. Tremblay<sup>8,9</sup>, D. Wang<sup>5</sup>, S. White<sup>10</sup> and others who opt in

contact author: gbtaylor@unm.edu

**ABSTRACT**

The first station of the Long Wavelength Array (LWA1) was completed in April 2011 and is currently performing observations resulting from its first call for proposals in addition to a continuing program of commissioning and characterization observations. The instrument consists of 258 dual-polarization dipoles, which are digitized and combined into beams. Four independently-steerable dual-polarization beams are available, each with two tunings of 16 MHz bandwidth that can be independently tuned to any frequency between 10 MHz and 88 MHz. The system equivalent flux density for zenith pointing is  $\sim 3$  kJy and is approximately independent of frequency; this corresponds to a sensitivity of  $\sim 5$  Jy/beam ( $5\sigma$ , 1 s); making it one of the most sensitive meter-wavelength radio telescopes. LWA1 also has two “transient buffer” modes which allow coherent recording from all dipoles simultaneously, providing instantaneous all-sky field of view. LWA1 provides superb and

---

<sup>1</sup>Department of Physics and Astronomy, University of New Mexico, Albuquerque NM, 87131, USA

<sup>2</sup>Greg Taylor is also an Adjunct Astronomer at the National Radio Astronomy Observatory.

<sup>3</sup>Bradley Department of Electrical and Computer Engineering, Virginia Polytechnic Institute and State University, Blacksburg, VA 24061, USA

<sup>4</sup>U.S. Naval Research Laboratory, Washington, DC 20375 USA

<sup>5</sup>NASA Jet Propulsion Laboratory, Pasadena, CA 91109 USA

<sup>6</sup>NASA Postdoctoral Program fellow

<sup>7</sup>Center for Gravitational Wave Astronomy and Department of Physics and Astronomy, University of Texas at Brownsville, Brownsville, TX 78520, USA

<sup>8</sup>ARC Centre of Excellence for All-sky Astrophysics (CAASTRO)

<sup>9</sup>International Centre for Radio Astronomy Research, Curtin University, Bentley WA, Australia

<sup>10</sup>Air Force Research Laboratory, Albuquerque NM USA

unique new capabilities for Galactic science, pulsar science, solar and planetary science, space weather, cosmology, and searches for astrophysical transients. Results from the LWA1 will detect or severely constrain the presence of hot Jupiters within 50 parsecs of Earth. The LWA1 will provide unsurpassed resolution in frequency and in time to examine phenomena such as solar bursts, and pulsars over a 4:1 frequency range that includes the poorly-understood turnover and steep-spectrum regimes. Observations to date have proven LWA1’s potential for pulsar observing, and just a few seconds with the completed 256-dipole LWA1 provide the most sensitive images of the sky at 23 MHz obtained yet. We are operating LWA1 as an open skies radio observatory, offering  $\sim 2000$  beam-hours per year ( $\sim 43\%$  of the available observing time) to the general community. At the same time, we are operating a backend for all-sky imaging and total-power transient detection, approximately 6840 hours per year ( $\sim 78\%$  duty cycle).

## 1. Introduction to LWA1

LWA1 originated as the first “station” (beamforming array) of the Long Wavelength Array (LWA). The LWA concept was conceived by Perley & Erickson (1984) and expanded by Kassim & Erickson (1998) and Kassim *et al.* (2005). It gained momentum with sub-arcminute imaging with the VLA at 74 MHz (Kassim *et al.* 1993, 2007a) and the project began in April 2007, sponsored primarily by the Office of Naval Research (ONR), with the ultimate goal of building an aperture synthesis radio telescope consisting of 53 identical stations distributed over the U.S. Southwest (Ellingson *et al.* 2009, 2011). Currently, the LWA project exists as a collaboration, which we refer to as the Long Wavelength Array Collaboration (LWAC). The LWAC is an informal “umbrella” organization which serves to facilitate collaboration among organizations, projects, and individuals with LWA-related interests. The LWAC has no legal identity, no specific charter, and no dedicated funding; membership is completely open and it exists solely to facilitate collaboration among its members. The LWAC coordinator is currently N.E. Kassim of the U.S. Naval Research Laboratory. The LWAC currently includes the following projects:

- LWA1: Originally conceived as the first station of the LWA; but which is now a dedicated radio telescope distinct from (but supportive of) the separate effort to build a long-baseline aperture synthesis instrument. The topic of this paper.
- LoFASM; an initiative by the University of Texas at Brownsville (UTB), PI R. Jenet, to build and deploy three or more mini-stations for the purpose of monitoring the sky for transient sources.
- Cosmic Dawn; a project to measure, or place constraints, on the HI signal from the Dark Ages using beamforming data from the LWA1. This effort is being led by J. Bowman.
- LEDA (“Large Aperture experiment to detect the Dark Ages”); an initiative to develop an alternative backend for LWA1 led by L. Greenhill. Additional information about LEDA is provided in § 2.4.



Fig. 1.— Aerial view of the LWA1 radio observatory.

- LWA; the continuing initiative to fund and build a 53-station long-baseline aperture synthesis instrument.

Institutions represented in the LWAC (as determined by attendance at the May 12, 2011 LWA1 User Meeting) include U.S. Air Force Research Laboratory (AFRL), Arizona State University (ASU), Harvard University, Kansas University (KU), Long Island University, National Radio Astronomy Observatory (NRAO), NASA Jet Propulsion Laboratory (JPL), U.S. Naval Research Laboratory (NRL), New Mexico Tech (NMT), University of New Mexico (UNM), University of Texas at Brownsville (UTB), and Virginia Tech (VT). New institutions and individuals are invited to join the LWAC and if interested should contact Namir Kassim (NRL) or Greg Taylor (UNM).

The LWA1 Radio Observatory is shown in Fig. 1. It is located on NRAO land within the central square mile of the VLA, which offers numerous advantages. The project to design and build LWA1 was led by UNM, who also developed analog receivers and the shelter and site infrastructure systems. The system architecture was developed by VT, who also developed LWA1's monitor & control and data recording systems. Key elements of LWA1's design were guided by experience gained from a prototype stub system project known as LWDA, developed by NRL and the University of Texas at Austin (York *et al.* 2007); and by VT's Eight-meter wavelength Transient Array (ETA; Deshpande 2009). NRL developed LWA1's active antennas, and JPL developed LWA1's digital processing subsystem. The LWA1 has recently been established as a University Radio Observatory by NSF and as such will make regular calls for proposal from the astronomical community starting in February 2012. Table 1 summarizes the capabilities of LWA. For more details see the LWA web pages at <http://lwa.unm.edu> including the LWA Memo series.

Table 1: Summary of LWA1 Specifications

Specification	As Built Description
Beams:	4, independently-steerable, each dual-polarization
Tunings:	2 independent center frequencies per beam
Freq Range:	24–87 MHz (>4:1 sky-noise dominated); 10–88 MHz usable
Instantaneous bandwidth:	$\leq 16$ MHz $\times$ 4 beams $\times$ 2 tunings
Minimum channel width:	$\sim 0$ (No channelization before recording)
Beam FWHM:	$[8, 2]^\circ$ at $[20, 80]$ MHz for zenith-pointing
Beam SEFD:	$\sim 3$ kJy (approximately frequency-independent) zenith-pointing
Beam Sensitivity:	$\sim 5$ Jy ( $5\sigma$ , 1 s, 16 MHz) for zenith-pointing
All-Dipoles Modes:	TBN: 67 kHz bandwidth continuously from every dipole TBW: Full band (78 MHz) every dipole for 61 ms, once every $\sim 5$ min.

Given the architectural similarities to a LOFAR low band array (LBA) station (de Vos, Gunst & Nijboer 2009), it is appropriate to identify key similarities and differences. LOFAR is an operational radio telescope array based in the Netherlands which includes a low band array (LBA) capability with frequency coverage overlapping that of LWA1. AART-FAAC ([www.aartfaac.org](http://www.aartfaac.org)) is a planned imaging-based search for radio transients with LOFAR, using a correlator which is currently under development. An approximate comparison of the sensitivity of the LOFAR and LWA1, based on information provided in Wijnholds & van Cappellen (2011), proceeds as follows: LWA1 has 258 dual-polarized dipoles, whereas LOFAR has 36 stations consisting of 96 dual-polarized dipoles each, of which only 48 can be used simultaneously, for a total of 1728 dual-polarized dipoles. However, LWA1 per-dipole system temperature is dominated by Galactic noise by a factor of at least 4:1, whereas LOFAR per-dipole system temperature is at best 1:1. Taking this into account, we estimate all of LOFAR is more sensitive than LWA1 by a factor of no greater than 4 on a per-bandwidth basis, at LOFARs optimum frequency ( $\sim 60$  MHz). We also note that LWA1 ( $34^\circ\text{N}$ ) sees a significantly different portion of the sky than LOFAR ( $\sim 52^\circ\text{N}$ ), including access to the interesting Galactic center and inner plane regions. A graphical comparison of LWA1 with LOFAR and other contemporaneous instruments is shown in Fig. 2.

For the convenience of the reader, Table 2 provides a glossary of defining some of the more arcane acronyms associated with LWA1.

At the time of this writing, science observations have begun while commissioning continues. We anticipate to reach IOC (“initial operational capability”) – essentially the beginning of routine operation as an observatory – by February 2012. We now summarize some early results obtained during commissioning. Fig. 3 shows single dipole total power for period of 24 hours at 38 and 74 MHz for two antennas. The dipole power measurements compare well with a model of the expected power derived from a sky model convolved with the calculated antenna pattern. The agreement confirms that we are strongly sky noise-dominated (>4:1 from 24-87 MHz), that we have a good understanding of our dipole responses, and that RFI is manageable.

Table 2: Glossary of LWA1 Terms

Term	Description
CARC	The UNM Center for Advanced Research Computing
CFP	Call for Proposals
CGP	Crab Giant Pulses
DRSU	Data Recorder Storage Unit (a 10 TB eSATA drive array used by LWA1 data recorders)
IOC	Initial Operational Capability
LDA	LWA1 Data Archive (see §4)
LEDA	Large aperture Experiment to detect the Dark Ages, a new backend for LWA1
LSL	LWA Software Library; a collection of software for reading and analyzing LWA data
LWA	Long Wavelength Array; a future aperture synthesis radio telescope consisting of 53 stations similar to LWA1
LWAC	LWA Collaboration
LWA1	The first LWA station, now operating as a single-station radio observatory
LWANA	The LWA North Arm Stub Station located near the end of the VLA’s North Arm (§ 3)
LWDA	The Long Wavelength Demonstrator Array, a 16 stand dipole array
LWIA	Long Wavelength Intermediate Array. A future 16-station implementation of LWA (§ 5)
MCS	Monitor and Control System, the software and computers that control LWA1
PASI	Prototype All-Sky Imager (An existing backend for LWA1).
Station	An antenna array and associated electronics. Analogous to a single dish, except able to point beams in multiple directions simultaneously
TBN	Transient Buffer Narrowband (an LWA1 “all sky” observing mode)
TBW	Transient Buffer Wideband (an LWA1 “all sky” observing mode)

We have begun imaging the sky with LWA1. In Fig. 4 we show three views of the sky taken with the Transient Buffer Narrowband (TBN) mode on May 16, 2011 using 210 stands (21945 baselines). In these Stokes I images one can see the Galactic plane, Cas A, and Tau A, and at the lowest frequency Jupiter is quite prominent. The LWA1 routinely images the sky in near real-time using the Transient Buffer Narrowband (TBN) capability of the station and a modest cluster located at the LWA1 (see Hartman et al. 2012, in preparation, for more details). These images are shown live on “LWA-TV” which is available from the LWA web pages<sup>1</sup>. Movies for each day are also available made from the individual 5 second captures.

In Fig. 5 we show a spectrogram obtained from TBW data taken over 24 hours for a 20-dipole zenith-pointing beam. The integration time of the individual captures is 61 ms, and one capture was obtained every minute. The frequency resolution is  $\sim 10$  kHz. The diurnal variation noted in Fig. 3 is apparent here as well. Strong RFI from the FM bands shows up as vertical lines at 88 MHz and above. Below 30 MHz there are a variety of strong communications signals. While there is abundant RFI visible in the spectrum, it is very narrowband, obscures only a tiny fraction of our band, and does not interfere with our ability to be sky-noise limited. More details about the RFI environment can be found in Obenberger & Dowell (2011).

<sup>1</sup><http://www.phys.unm.edu/lwa/lwatv.html>

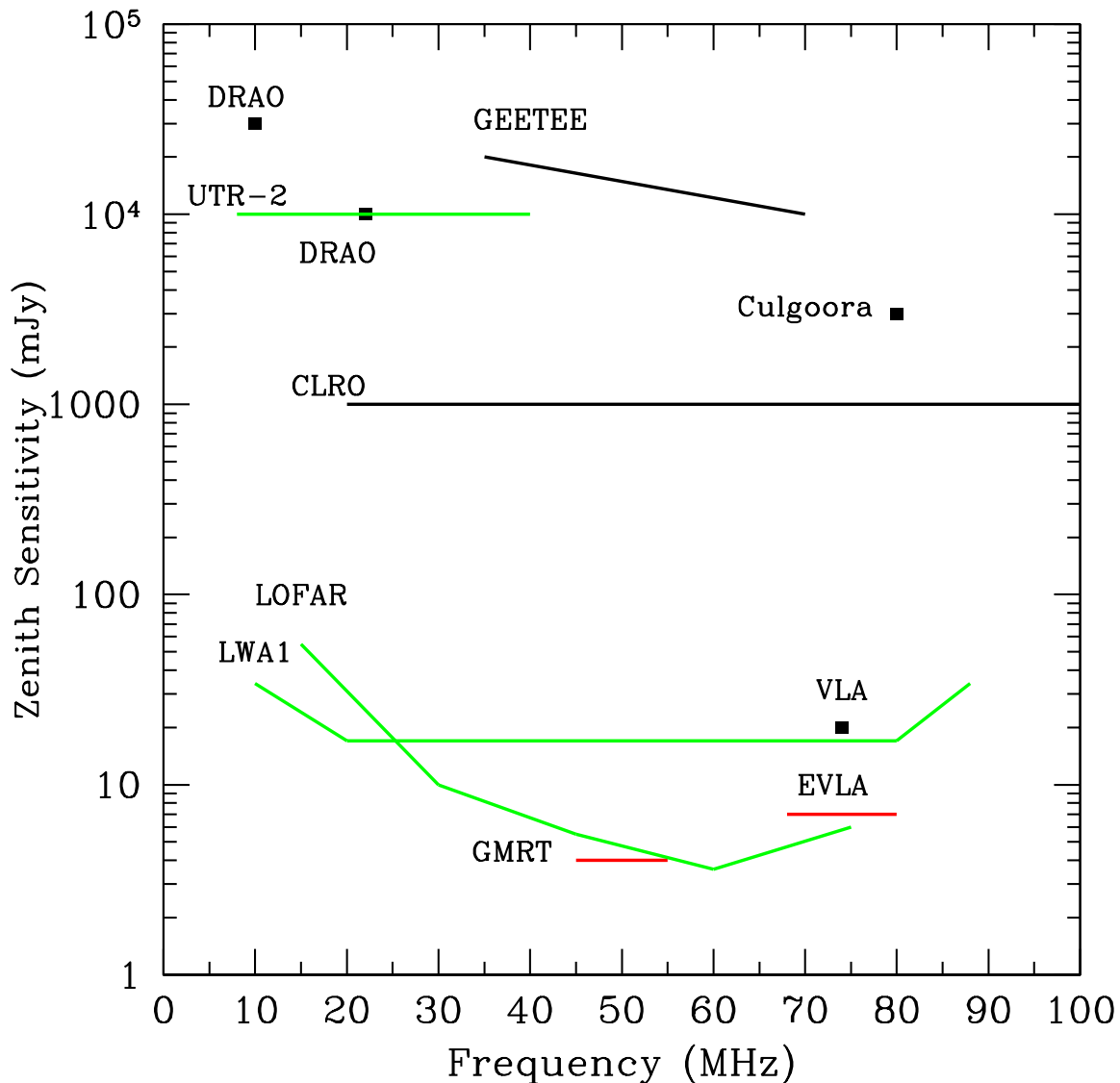


Fig. 2.— Sensitivity of the LWA1 compared to other instruments. Integration time is 1 hour for all instruments and the bandwidths used for current and planned instruments (green and red respectively) are as follows: UTR2: 33 MHz, LOFAR: 16 MHz, Y=VLA: 3 MHz, LWA1: 16 MHz, GMRT: 10 MHz. No effects of confusion noise are considered.

Figure 7 demonstrates that with very simple RFI mitigation, LWA1’s sensitivity is limited by noise alone – as opposed to RFI or instrumental stability – for integrations up to many hours. Note that we have made no deliberate attempt in Fig. 7 to correct for instrumental stability (e.g., calibration against a noise standard), and that doing so can be expected to result in even better performance.

The LWA1 supports the formation of up to 4 simultaneous beams. In Fig. 6 we illustrate the formation of two simultaneous beams, one placed on Cassiopeia A and one placed on Cygnus A. No tracking was performed so the two sources drift through the beam. In the beam that drifts

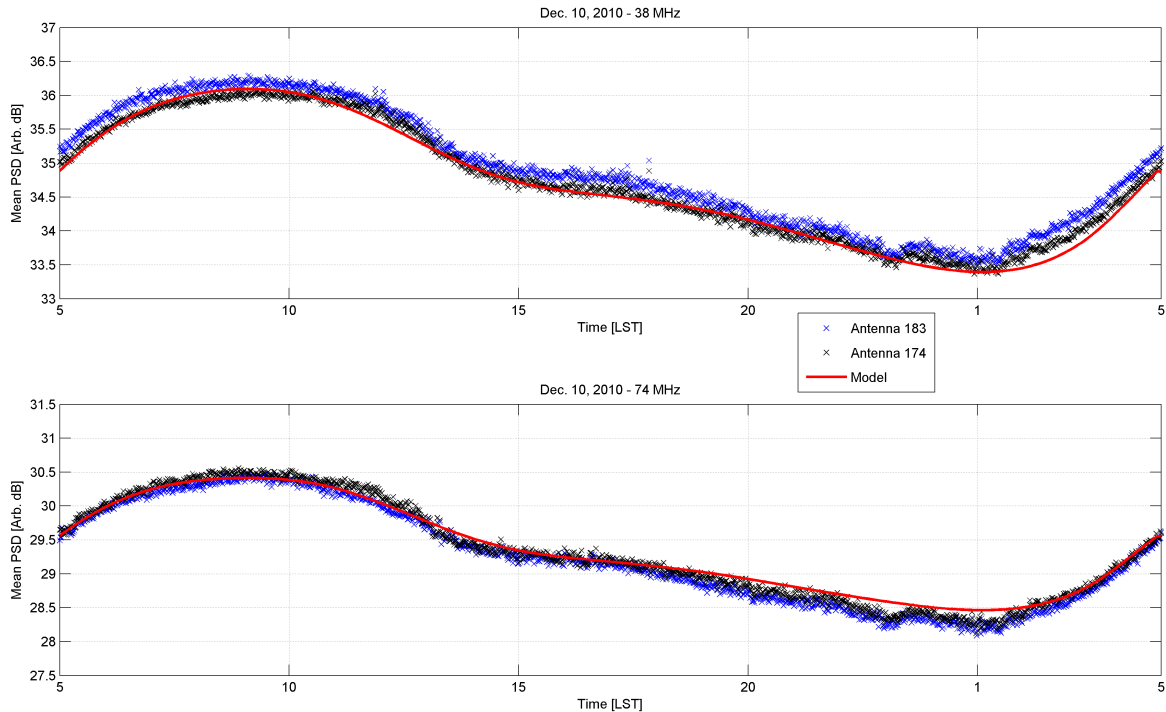


Fig. 3.— Dipole total power measurements (1 MHz bandwidth, 61 ms integration per point). Variation is due to the changing sky brightness temperature distribution as seen by the dipole. The solid red line is our prediction obtained by convolving the sky model of de Oliveira-Costa *et al.* (2008) with a model of the dipole pattern obtained from electromagnetic simulation. No RFI mitigation or editing has been applied.

across Cygnus A one can see the response of the beam to galactic emission as well as to Cygnus A. The two sources have roughly equal flux density at 74 MHz (17 kJy; Helmboldt & Kassim 2009), so the observed difference is primarily a result of the different dipole patterns associated with their respective elevations.

In Fig. 8 we show the pulse profile from B1919+21, a strong, long period, low dispersion measure pulsar. This was one of the first observations with the beamforming mode of the LWA1, and not only confirms the ability of LWA1 to do leading-edge pulsar science, but also demonstrates that digital beamforming is working properly.

## 2. Scientific Program

With the ability to point in several directions at once, wide fractional bandwidths, and large collecting area, the first LWA station will make important scientific contributions in several fields. We have been refining the science case for LWA1 over 5 years – see Kassim *et al.* (2006), Clarke *et al.* (2009), Rickard *et al.* (2010), and Lazio *et al.* (2010) for details. Projects granted observing time in the first (primarily internal) call for proposals cover a range of topics including pulsars, transients, cosmology, Galactic science, the Sun, and the Earth’s ionosphere (see Table 3). Below



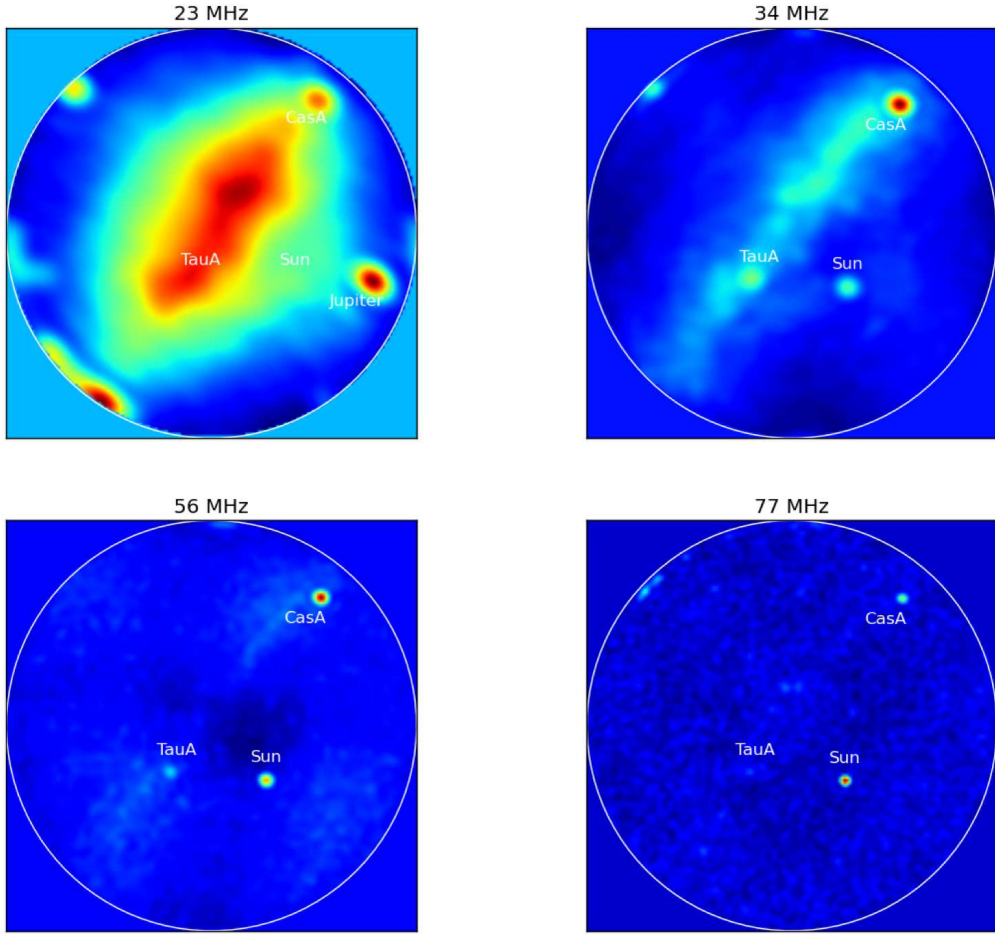


Fig. 4.— Nearly-simultaneous all-sky images taken at 4 widely separated frequencies using LWA1’s TBN mode. Absolute calibration is the same in all four images; the apparent decrease in sky brightness with increasing frequency is real, and the bright region near zenith is the Galactic plane. Clearly visible at 23 MHz is Jupiter, and the horizon “hot spots” in the 23 MHz image are ionospherically-refracted RFI. Note that Cas A and the Sun are visible in all images. Data was obtained for 10 seconds each, 50 kHz bandwidth, using 210 dipoles (about 45 dipoles have connector or FEE issues needing attention and are not currently in use).

we elaborate upon several of these topics and the headway that the LWA1 will soon make in each.

## 2.1. Pulsars

Pulsars are fascinating objects with spin periods and magnetic fields strengths ranging over 4 and 5 orders of magnitude respectively. Though it is well accepted that pulsars are rotating neutron stars, the pulsar emission mechanism and the geometry of the emitting region are still poorly understood (Eilek *et al.* 2005). LWA1 will be an excellent telescope for the study of pulsars including single pulse studies, and studies of the interstellar medium (ISM). In fact it



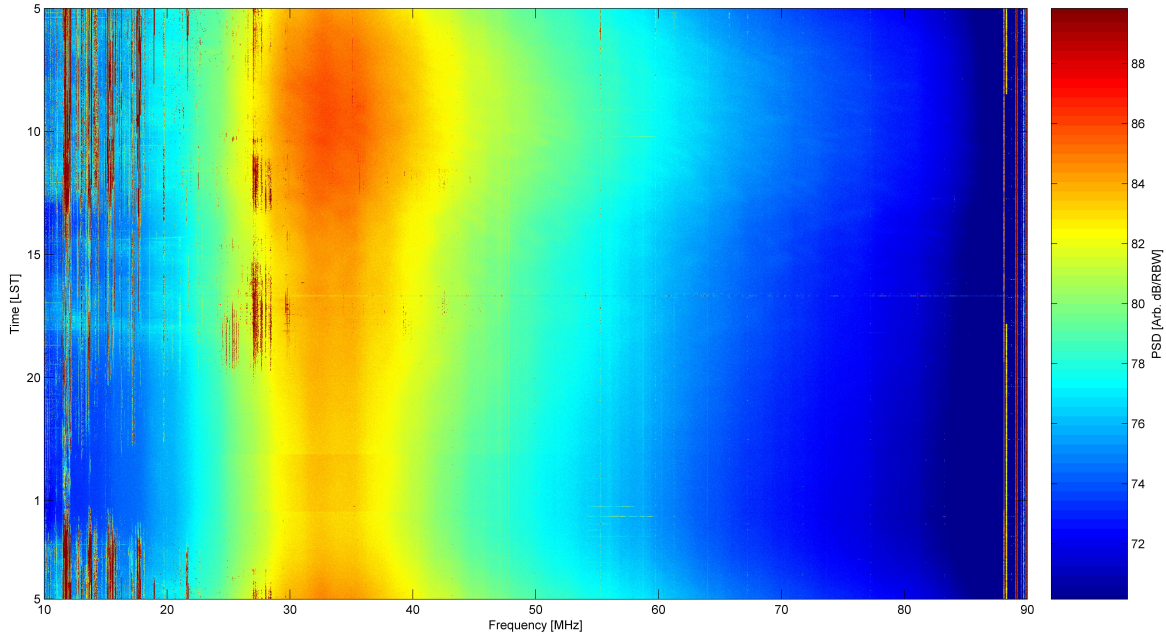


Fig. 5.— Spectrum using the TBW capture mode for 20 dipoles phased at zenith for 24 hours. The time and frequency variation of the background are real; the contribution of the active antenna appears as a step role-off below 30 MHz. Note that 30-88 MHz is always useable, and even frequencies as low as 13 MHz are usable for a few hours each day.

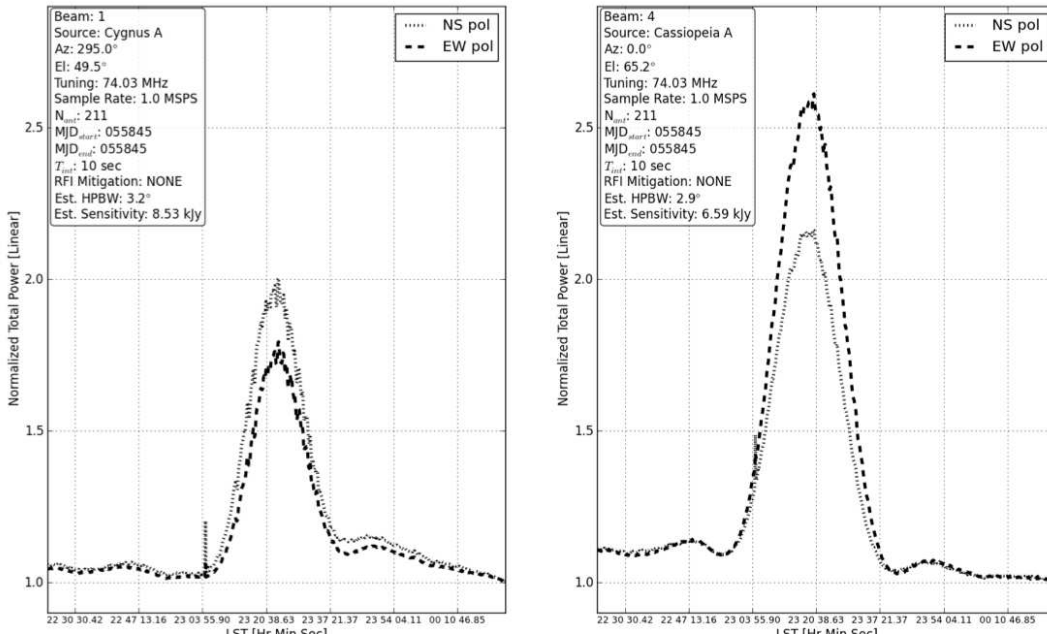


Fig. 6.— Simultaneous observations of Cyg A and Cas A using two of the four LWA1 beams at 74 MHz with a 1 MHz bandwidth.

is in the LWA1 frequency band range where strong evolution in pulsar radio emission can be observed, e.g, a turn over in the flux density spectrum, significant pulse broadening, and complex

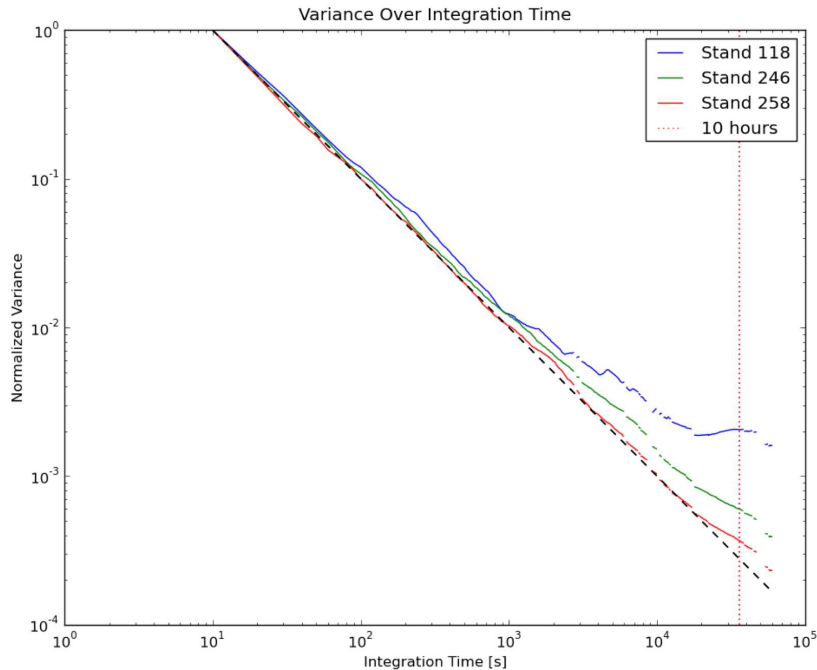


Fig. 7.— Variance over time using a  $\sim 50$  kHz bandwidth and 2048 channels at 38 MHz for three dipoles. The black dashed line shows the expectation of variance falling as the square root of integration time. The vertical bar marks 10 hours. Crude RFI excision was performed by discarding  $\sim 20\%$  of the channels.

changes in the pulse profile morphologies (Malofeev et al. 1994). And, although pulsars were discovered at low frequency (81 MHz), there is a remarkable lack of observational data in the LWA1 frequency range. LWA1 has detected 3 pulsars (e.g., Fig. 8) and should be able to detect dozens more (see Jacoby *et al.* 2007) in less than 1000 seconds.

LWA1 will be able to perform spectral studies of pulsars over a wide frequency range and with high spectral resolution. This will allow investigators to look for drifting subpulses. Strong notches have been seen to appear in the profiles of pulsars at low frequencies (Hankins 1973), but little progress has been made in understanding their origin. Some pulsars may reach 100% linear polarization at low frequencies (B1929+10; Manchester *et al.* 1973). In addition to being intrinsically of interest (providing clues about the pulsar magnetospheric structure), such strongly polarized beacons can assist in probing coronal mass ejections and determining the orientation of their magnetic fields, which strongly affects their impact on Earth.

LWA1’s large collecting area will be particularly useful for “single pulse” science, including studies of Crab Giant Pulses (CGPs) and Anomalous Intense Pulses (AIPs). The Crab Pulsar intermittently produces single pulses having intensity greater than those of the normal periodic emission by orders of magnitude. Despite extensive observations and study, the mechanism behind CGPs remains mysterious. Observations of the Crab pulsar across the electromagnetic spectrum can distinguish between various models for GP emission such as enhanced pair cascades, radio coherence, and changes in beaming direction. To date the study of the CGP emission at low radio frequencies is only very sparsely explored. Reported modern observations of CGPs

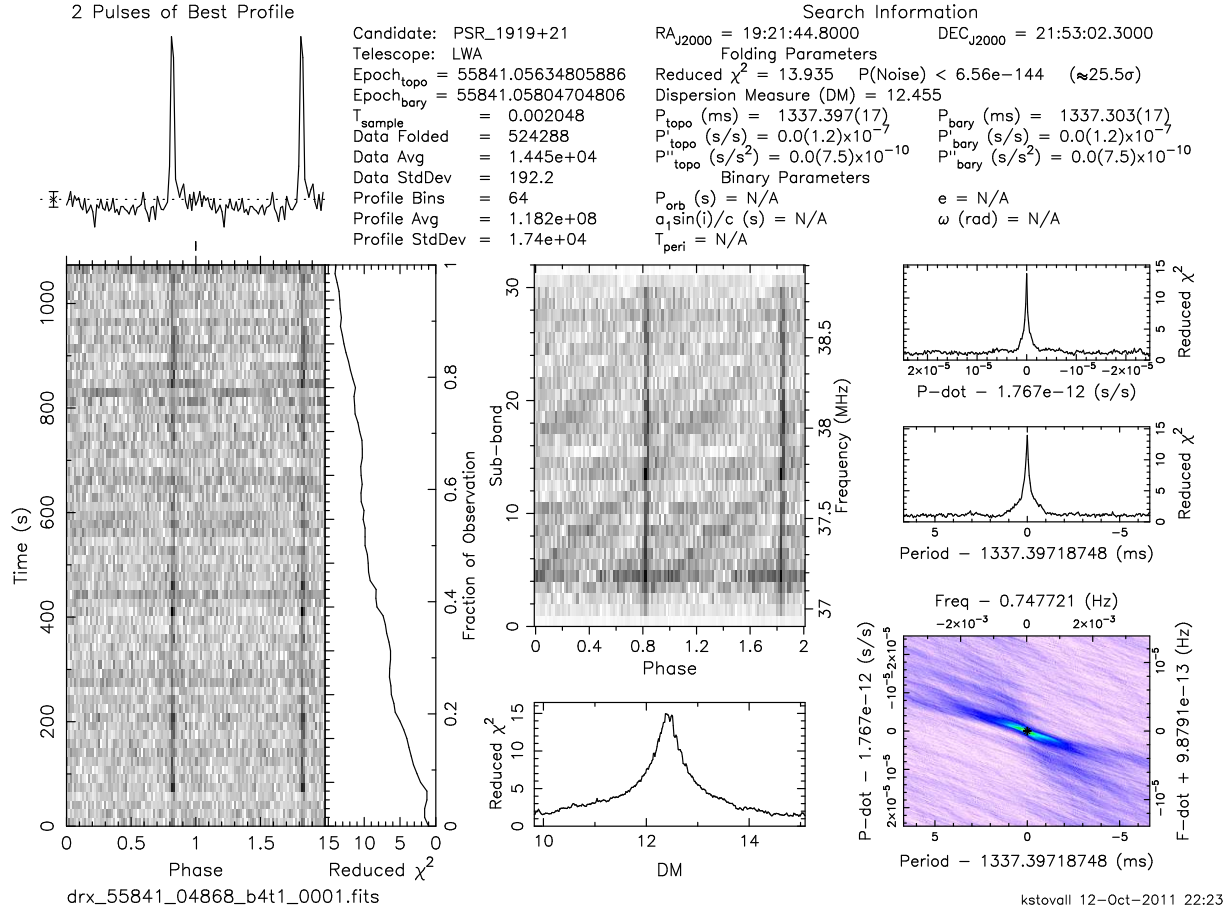


Fig. 8.— First detection of the pulsar 1919+21 using phase-and-sum beamforming in a narrow (1 MHz) beam taken during commissioning observations. The pulsar observations were processed using PRESTO (Ransom 2001).

in this frequency regime are limited to just a few in recent years including UTR-2 at 23 MHz (Popov *et al.* 2006), MWA at 200 MHz (Bhat *et al.* 2007), and LOFAR LBA (Stappers *et al.* 2011). LWA1 will be able to provide hundreds of hours per year of sensitive observations of CGPs which will revolutionize our knowledge of the time- and frequency-domain characteristics of these enigmatic events.

We should be able to measure scattering for practically every good CGP detection ( $S/N \sim 20$  or better), and it is known that both the dispersion and scattering of the Crab emission can vary dramatically on short or long time scales. By observing over an extremely broad bandwidth, we may be able to better quantify the scatter broadening and thereby assess the level and importance of anisotropy. Furthermore, the broad bandwidth of the observations will be helpful in shedding light on the issue of the frequency scaling of the scattering (believed to be  $\sim 3.6$  compared to the canonical value of  $\sim 4.4$  for the general ISM), which is thought to be related to the nature of turbulence in the nebula.

Anomalous high intensity single pulses from known pulsars have been reported previously using

the UTR-2 (Ulyanov *et al.* 2006) and LOFAR (Stappers *et al.* 2011). These anomalously intense pulses (AIPs) have many features similar to the giant pulse phenomenon, including emission in a narrow longitude interval and power-law distribution of the pulse energy. One distinctive feature of these AIPs, however, is that they are generated by subpulses or some more short lived structures within subpulses. The emission is seen to be quite narrow band, typically 1 MHz in bandwidth. The nature of such pulses is not yet understood. The LWA1 with its excellent sensitivity and large available bandwidth provides an opportunity to study these pulses.

## 2.2. Hot Jupiters

The magnetized planets in our solar system are well known to produce extremely bright coherent radio emission at low frequencies (e.g., Carr *et al.* 1983). In the past decade, with the abundant detection of planets around other stellar systems, much theoretical work has been carried out on the detection of similar radio emission from extrasolar planets (e.g., Lazio *et al.* 2009). Such a detection is the only currently viable method for measuring the magnetic fields and rotation rates of extrasolar planets, and it may provide information about the other properties, such as interior composition. For a terrestrial-mass planet, a magnetic field may be important for determining its habitability by protecting the planet from energetic particles. The brightest extrasolar planets are the Hot Jupiters (HJs), which we define as having semimajor axes less than 0.5 AU and masses above 0.5 Jovian masses.

Using the LWA1, we will conduct a volume-limited search out to 50 pc for decametric emission from all known HJs in the northern hemisphere. The observational capabilities of the LWA1 are uniquely suited to the properties of these sources:

- **Low-frequency coverage.** Decametric emission from a HJ will exhibit a sharp cutoff at the electron cyclotron frequency of the planet’s magnetic field, with typical cutoffs ranging from 1–100 MHz. The LWA1’s benign RFI environment allows observation down to 20 MHz routinely, and down to 10 MHz during favorable ionospheric conditions.
- **Sensitivity to polarized and “bursty” emission.** HJ emission is expected to be highly polarized and released in bursts with timescales of  $\sim 1$  ms to  $\sim 10$  s; LWA1 observations provide full Stokes parameters and better than 1 ms temporal resolution.
- **Extensive coverage of many targets.** The emission may be narrowly beamed, intersecting the Earth for a small fraction of the 10–100 hr rotational periods for some sources, while missing Earth entirely for others. The multiple independent beams of the LWA1 allow us to dedicate approximately 300 beam-hours to begin this survey.
- **mJy sensitivity.** The large collecting area of the LWA1 allows us to achieve a typical (non-imaging) sensitivity of 10 mJy for each observation in our survey (of duration 14 hours), lower than the  $\sim 100$  mJy flux densities predicted for some HJs (Griessmeier *et al.* 2007).

To date, searches below 70 MHz have had sensitivities of no better than 100 mJy (Zarka 2007). After only six months of observation, we will either make a detection or be able to place restrictive limits on models for HJ emission.

Additionally, the LWA1 will be used to conduct blind searches for HJ emission. Based on stellar density estimates of the solar neighborhood (e.g., Howard *et al.* 2010), we expect approximately 5,000 HJs within 100 pc. At a probable detection frequency of 20 MHz, an LWA1 beam is  $\sim 50$  deg<sup>2</sup> at zenith (and larger still at lower altitudes), on average covering six nearby but unknown HJs. To detect these sources, we will add a search of bursty, highly polarized emission to our analysis of the beamformed data. Candidate detections will be followed up with dedicated observational programs to look for periodicity of such emission, a sign that we have detected a HJ or similarly emitting brown dwarf.

### 2.3. Transients

Astrophysical transient sources of radio emission signal the explosive release of energy from compact sources (see Lazio *et al.* 2010, Cordes & McLaughlin 2003 for reviews). Known types of radio transients include Cosmic ray airshowers, solar flares (§2.5), Jovian flares and flares from extrasolar Hot Jupiters (§2.2), giant flares from magnetars (Cameron *et al.* 2005), rotating radio transients (McLaughlin *et al.* 2006), giant pulses from the Crab (§2.1), and supernovae. The study of these sudden releases of energy can allow us to recognize these rare objects, and can yield insights to the nature of the sources including energetics, rotation rates, magnetic field strengths, and particle acceleration mechanisms. Furthermore, some radio transients remain unidentified such as the Galactic Center Radio Transient (Hyman *et al.* 2005), and require further study. A number of sources have been predicted to produce strong radio transients, but have not yet been observed, including prompt emission from GRBs (Benz & Paesold 1998), neutron star mergers (Hansen & Lyutikov 2001), expiration of primordial black holes (Rees 1977; Blandford 1977), topological phase transitions in primordial black holes (Kavic *et al.* 2008), and superconducting cosmic strings (Vachaspati 2008).

A number of instruments have been built to study the meter-wavelength transient radio sky including the Cambridge Low Frequency Synthesis Telescope (Dessenne *et al.* 1996), the Fallbrook Low-Frequency Immediate Response Telescope (FLIRT; Balsano 1999), the Eight-meter Transient Array (ETA; Deshpande 2009), and the Long Wavelength Demonstrator Array (LWDA; Lazio *et al.* 2010). These surveys had limited collecting area, field-of-view, or availability. LWA1 will far surpass these instruments, with sensitivity two orders of magnitude better, and access to the whole sky all the time.

The Prototype All-Sky Monitor (PASI) is a software correlator and imager for LWA1 that analyzes the TBN data stream, which provides continuous samples from all dipoles with a 67 kHz passband placeable anywhere within 10–88 MHz (see §3). PASI will image nearly the whole sky ( $\approx 1.5\pi$  sr) many times per minute, continuously and in realtime, with full Stokes parameters and typical sensitivities of  $\sim 5$  Jy at frequencies above 40 MHz and  $\sim 20$  Jy at 20 MHz. Candidate detections can be followed up within seconds by beamformed observations for improved

sensitivity and localization. These capabilities provide an unprecedented opportunity to search the synoptic low-frequency sky. PASI will save visibility data for at least 5 days, allowing it to “look back in time” in response to transient alerts. And the images generated by PASI will be archived at a set integration time from inception.

LWA1 will also search for single dispersed pulses or cosmic “events” using beamforming mode. This mode trades all-sky capability for greater bandwidth. Multiple beams will be used to mitigate against interference. In 50-70 MHz, any given coordinate will remain in the beam for about 14 minutes, which is sufficient to view the entire duration of pulses with DM up to  $\sim 1100$  pc cm $^{-3}$ .

Ultimately, we plan for LWA1 to generate and accept alerts for multi-wavelength follow-up; its observations will be even more valuable in conjunction with the results of other facilities surveying large areas of the sky (e.g., Fermi, Pan-STARRS, LSST, LIGO). Furthermore, LWA1 is complementary to LOFAR in that the two instruments have little simultaneous overlap on the sky, but superior in that it has much better access to the Galactic center and inner plane where one might expect some transient populations to be concentrated (Kassim *et al.* 2007b).

#### 2.4. Cosmic Dawn and LEDA

Understanding the origin, formation, and evolution of the first galaxies is one of the major questions of astrophysics. Identified by the Astro2010 decadal review (New Worlds, New Horizons in Astronomy and Astrophysics) as an area ripe for exciting new discoveries, the period of “Cosmic Dawn” encompasses the formation of the first galaxies and black holes. These luminous sources produce UV and X-ray radiation that radically alters the properties of the diffuse neutral hydrogen gas that fills the majority of space at these times. It is crucial that we develop observational probes of this era since this would give valuable insights into the energetics of the early universe and the processes of initial galaxy formation. One unique avenue for observationally constraining the radiative properties of the first luminous objects is via low frequency radio observations of the redshifted 21 cm line of neutral hydrogen (Madau *et al.* 1997).

Coupling with the gas temperature results in the HI line being seen in absorption at high redshifts, when the gas is cooler than the CMB due to adiabatic expansion (during the so-called “Dark Ages”); it appears in emission at lower redshifts, after the gas becomes heated by X-rays from the first stars and black holes. According to theoretical models, the turnover between these regimes is around  $z \sim 17$ , at 80 MHz (Furlanetto *et al.* 2006; Pritchard & Loeb 2008), and the maximum absorption occurs between 50 and 100 MHz (Pritchard & Loeb 2010). Fig. 9 shows a theoretical model for the temperature history of the early universe, along with the predicted HI absorption signature.

J. Bowman and collaborators have proposed a novel approach to measuring the global 21 cm signature using the LWA1. They will detect or constrain the absorption peak that marks the end of the Dark Age using LWA1. The LWA1 is well-matched to the expected frequency range of the absorption peak, and by simultaneously forming a science beam that targets a relatively cold region of sky and a strong source with a known spectrum, they will achieve a lower foreground

and a better spectral calibration than single-antenna experiments allow. Furthermore, they will be able to repeat the experiment using different patches of sky, which further reduces the problem of foregrounds and allows for follow-ups of any marginal detections. This approach requires no additional hardware beyond what has already been developed for the LWA1 and can be accomplished in  $\sim 500$  beam hours.

At a modest cost, L. Greenhill and collaborators have proposed a more ambitious method to measure or constrain the HI signal from the Dark Ages<sup>2</sup><http://www.cfa.harvard.edu/LEDA/>. The LEDA instrument comprises (i) a large-N correlator deployed to the LWA1, (ii) hardware to equip four custom outrigger dipoles for calibrated total-power measurements, and (iii) a data calibration pipeline with which to commission the system and demonstrate measurement of the spectrum of sky-averaged power with an array. Cross-correlation for a large-N array scales as  $O(N^2)$  and poses significant computing challenges. Hundreds of apertures and frequency channels, and tens of MHz bandwidth require  $> 10^{14}$  ops  $s^{-1}$ . The LEDA FX correlator (512 inputs and 50 MHz) will combine Field Programmable Gate Arrays serving the  $O(N)$  F stage and Graphics Processing Units (GPUs) serving the  $O(N^2)$  X stage. The system is intended to be cost effective, power efficient, rapidly deployable, and reconfigurable, thus enabling various further processing to be performed in situ (e.g., pulsar gating for differential calibration of dipole gain patterns).

We note that detecting the 21 cm signal from the Dark Ages has many challenges to overcome including foreground subtraction, understanding sidelobe systematics, mitigating RFI and mutual coupling, and coping with ionospheric distortions. It could be that space-borne measurements are needed to bypass RFI and ionospheric effects. The Dark Ages Radio Explorer (DARE) mission (Burns *et al.* 2012) has been proposed to deploy a radio telescope into an orbit around the moon to measure the Dark Ages signal.

## 2.5. Solar Bursts

Single antenna measurements with the Green Bank Solar Radio Burst Spectrometer (GBSRBS) of solar bursts have indicated the ease with which LWA1 will be able to detect fine frequency and time structure. We will use single-beam measurements of the Sun, taking advantage of the sensitivity and temporal and spectral resolution available with the first station, to look specifically at the fine structure in Type II and Type III bursts, and possibly to track moving Type IV bursts. The combination of sensitivity and time resolution will permit us to use the wave field statistics to test proposed models for the emission process. An example of this is shown in Fig. 10 taken during the solar storm on 2011 Feb 14 using the TBN mode with 10 dipoles and the prototype LWA1 digital processor.

Type III bursts are driven by beams of nonthermal keV-energy electrons propagating out from the Sun on open field lines, producing radio emission at the local plasma frequency by plasma emission, i.e., conversion of electrostatic Langmuir waves into electromagnetic waves. Since the

---

<sup>2</sup><sub>1</sub>



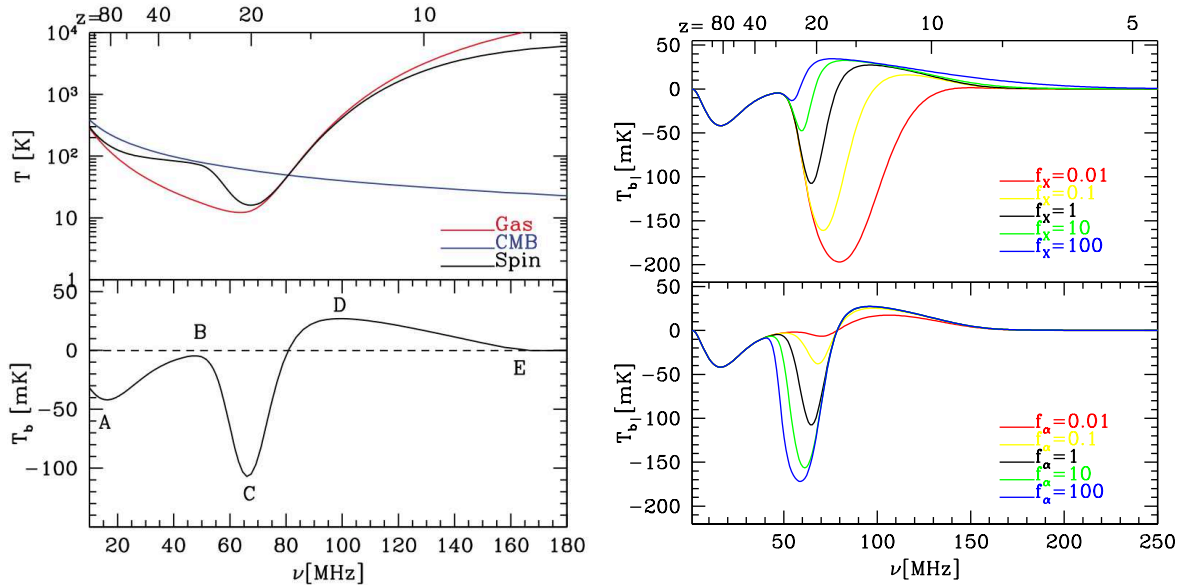


Fig. 9.— Evolution of temperature scales relevant for the 21 cm signal as a function of frequency. Top left panel: Evolution of the gas (red curve), CMB (blue curve), and spin (black curve) temperature for the fiducial history of Pritchard & Loeb (2010). Bottom left panel: Evolution of the 21 cm brightness temperature with inflection points (A,B,C,D,E) labeled. LWA1 will probe the regions from 20-84 MHz where the signal is in absorption. Right: Alternative scenarios for 21 cm heating from X-rays (top) and Ly $\alpha$  (bottom) which changes the strength of the absorption signal.

electrons are travelling rapidly outward into the low density plasma, the corresponding radio bursts drift rapidly downwards in frequency and appear as nearly vertical features in frequency-versus-time plots (“dynamic spectra”). The currently favored “stochastic growth” theory for plasma emission predicts a log-normal distribution for wave-field strengths in these bursts (e.g., Cairns & Robinson 1999) that can be tested with LWA1 data. By contrast, Type II bursts are associated with shocks propagating through the solar corona. They are often correlated with coronal mass ejections, which can generate shocks as they move through the solar atmosphere at high speed. However, there are aspects of Type II bursts that appear to be associated with the structure of the flaring region itself. Type II bursts show much substructure in frequency-time plots that may be associated with inhomogeneity in the shock, and with the exact mechanism for generation of Langmuir waves. The exact nature of the source of plasma emission in Type II bursts is still not entirely understood: it could be due to widespread electron beams, as in Type III bursts, but this is more likely to be true of the structures known as “herringbone”, short-lived fast-drift structures seen to emerge from the backbone of Type II emission. LWA1 data sampled at high temporal and spectral resolution may give clues to acceleration processes in the shock driving the burst. Moving Type IV bursts are associated with large solar eruptions and can move several degrees at thousands of km/s: in extreme cases LWA1’s high signal-to-noise should permit it to measure such motions even with the large beam and reinvigorate a field of study that has been largely dormant for 20 years due to the lack of imaging at LWA1’s frequencies where these intriguing (and potentially space-weather relevant) phenomena occur.

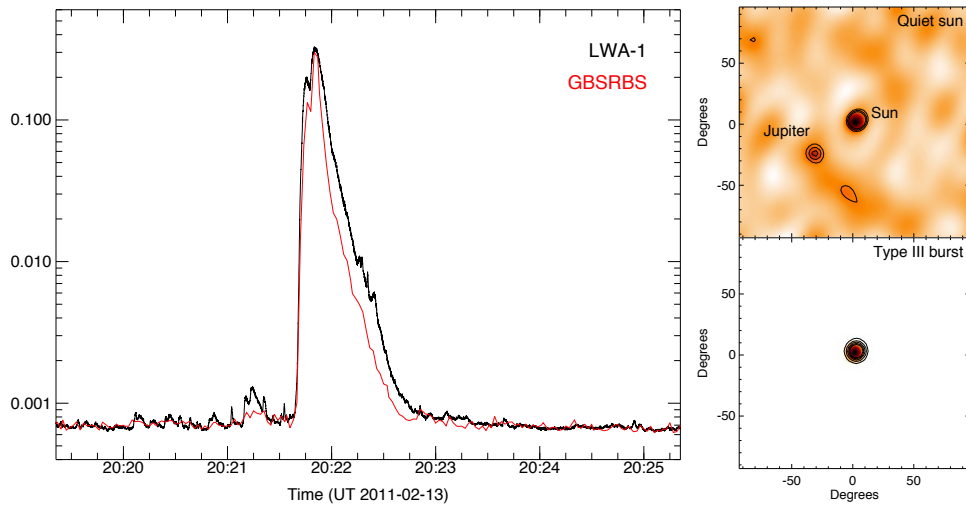


Fig. 10.— (Left) The 30 MHz light curve of a solar Type III burst at 0.04 s time resolution (bandwidth 50 kHz) from LWA1 (black line), compared with (red line) the 2 s time resolution, 2 MHz bandwidth light curve from the GBSRBS. The noise level in the LWA1 data is much lower than in the GBSRBS data (from a single dipole antenna), and much of the low-level LWA1 variability is real. (right) Comparison of LWA1 maps of the sky centered on the Sun before the burst (upper, 2011 Feb 13 at 20:19:20 UT) and near the peak of the burst (lower, 20:21:50 UT). Both maps contain a few seconds of data and use 4 kHz of bandwidth. The maps were made using data from just 8 dipoles relatively close to each other in LWA1. The resolution is 10 degrees. The peak in the burst map is about 5000 times brighter than the peak in the pre-burst map.

## 2.6. Radio Recombination Lines

Radio recombination lines (RRLs) arise in ionized and partially ionized gas, and therefore offer valuable probes of the physical condition of the diffuse ionized interstellar medium. In particular, the size of the electron orbital increases for high quantum numbers, making the particles extremely sensitive to temperature and density of the medium. At LWA1 frequencies the excitation temperature approaches the kinetic temperature and RRLs are expected to be seen in absorption, confirmed by carbon RRL detections (Fig. 9; Stepkin *et al.* 2007; Kantaria & Anantharamaiah 2001; Erickson *et al.* 1995). Hydrogen RRLs at these frequencies are as yet undetected, perhaps due to a dielectronic electron capture mechanism increasing the chance of absorption in atoms with multiple electrons such as carbon (Walmsley & Watson 1982).

Our knowledge of carbon (and other species) RRLs is currently relatively limited, and the LWA1 opens up a new venue for observations of these lines. In particular, the versatile bandwidth and spectral resolution will be essential for successful observations of RRLs (Peters *et al.* 2011). For example, at frequencies  $\sim 26$  MHz the spectral resolution required to separate between the carbon RRLs is  $\sim 125$  kHz (see Fig. 9). At the same time, a large bandwidth is desired since then many lines can be observed at the same time, and the resulting spectra can be stacked to search for a possible detection. Using three beams at the LWA1 we can simultaneously cover about 85

carbon transitions with a 0.5 kHz spectral resolution (6 km/s). This is straightforward for LWA1 because the native format for data recording is voltage samples, as opposed to spectrometer output; channelization can be performed in software at any desired frequency resolution.

The first approved RRL observing project (see Table 3) includes proof-of-concept observations of the known lines in Cas A to work out any necessary calibration and reduction procedures. Once these are established, three targets in the Cygnus Arm have been selected as suitable places for an initial RRL search. The three targets are DR21 (HII region), HB21 (supernova remnant) and DR4 (supernova remnant), all of which are bright at low radio frequencies and are likely to contain large amounts of ionized or partly ionized gas. Future possible and obvious RRL studies with the LWA1 include surveys of large regions to map the conditions of the diffuse ISM, and searches for other RRL species.

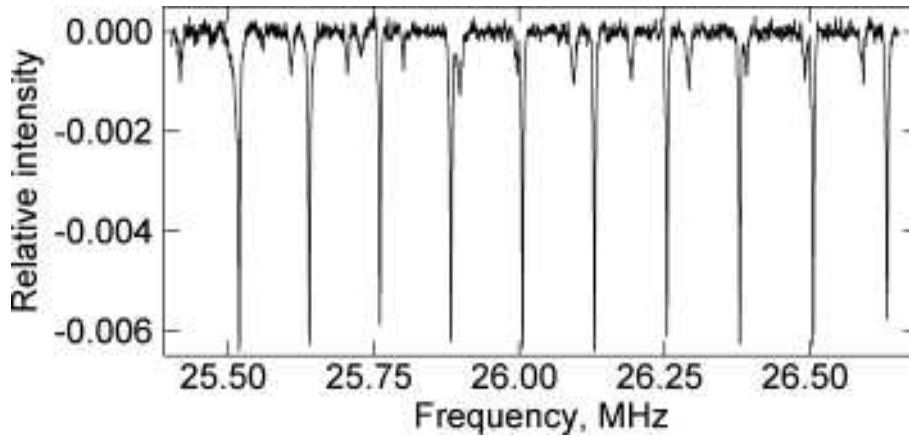


Fig. 11.— The spectrum of carbon at 26 MHz taken in the direction of Cas A (Stepkin *et al.* 2007)

### 3. Observatory Description

LWA1 lies on NRAO property, just a few hundred meters southwest of the center of the VLA (see Figure 1). The LWA1 system architecture is shown in Figure 12. The array consists of 258 active antenna “stands”, where each stand is a pair of orthogonally-aligned active dipoles sharing a mast. All but two of the antennas are located within an ellipse of 100 m (East–West)  $\times$  110 m (North–South), with the axial ratio intended to improve beam shape for pointings toward the Galactic Center, which transits at  $Z \approx 63^\circ$  as seen from the site. The other two stands are outliers (one 77 m SW of center, and one 300m E of center) used primarily for calibration and diagnostic purposes. Additional outliers are planned as part of the LEDA project.

An LWA1 antenna stand is shown in Figure 13a. Integral to the stand is an “active balun” that provides about 35 dB of gain to overcome subsequent losses, ensuring that the system temperature is dominated by Galactic (*not* internal) noise, as demonstrated in Figure 13b. Upon arrival in the shelter, the signal from every antenna is processed by a direct-sampling receiver

Table 3: LWA1 approved observing projects

Project Title	Beam hours	TB hours	PI	PI Affil.	Co-I
LWA Cosmic Ray Air Shower Trigger		144	D. Besson	KU	UNM
Tracking the Dynamic Spectrum of Jupiter	56	20	T. Clarke	NRL	MTSU,UNM, NRAO,UTas
Ionospheric Scintillation	344		P. Crane	NRL	UCSD
Passive Meteor Scatter using the Long Wavelength Array	40	20	S. Close	Stanford	PSU,Stanford
A GCN-Triggered Search for GRB Prompt Emission	320		S. Ellingson	VT	
Crab Giant Pulses	640		S. Ellingson	VT	JPL,NRL,Swinburne
Continuing Measurements of the Cas A/Cyg A Flux Ratio	6		J. Hartman	NRL	
Searching for Hot Jupiters with the LWA1	300		J. Hartman	NRL	UCB
Carbon Radio Recombinations Lines in the Cygnus Arm	378		Y. Pihlström	UNM	NRL,UTas
Multi-frequency Large Scale Sky Survey	672		E. Polisensky	NRL	UTas
Low Frequency Studies of Radio Pulsars	50		P. Ray	NRL	VT,NMT
Ionospheric Absorption Measurements using LWA1 as an Imaging Riometer	432	216	L. Rickard	UNM	JPL,NRL
Single Dispersed Pulses	320		J. Simonetti	VT	UMd,CWRU,CNJ
Observing the Transient Universe with the First LWA Station		Cont.	G. Taylor	UNM	VT,NRL, JPL, LANL
Solar Radio Bursts at High Temporal and Spectral Resolution	320	160	S. White	AFRL	UNM,NRL,GMU, UMd,UTas
LEDA	300		L. Greenhill	CfA	
Observing Cosmic Dawn with LWA1	520		J. Bowman	ASU	UNM

Notes: These projects have already been allocated observing time in 2011/2012. Categories 1 and 2 and described in § 4.

consisting of an analog receiver, a 12-bit analog-to-digital converter (A/D) which samples 196 million samples per second (MSPS), and subsequent digital processing (“DP”) (See Figure 14b). This choice of sample rate ensures that strong RFI from the 88–108 MHz FM broadcast band aliases onto itself, with no possibility of obscuring spectrum in the 10–88 MHz tuning range. Beams are formed using a fully-digital time-domain delay-and-sum architecture, which allows the entire 78 MHz passband associated with each antenna to be processed as a single data stream (Soriano *et al.* 2011). Delays are implemented in two stages: An integer-sample “coarse” delay is applied using a first-in first-out (FIFO) buffer operating on the A/D output samples, followed by a 28-tap finite impulse response (FIR) filter that implements an all-pass “subsample” delay. The filter coefficients can be also specified by the user, allowing the implementation of beams with custom shapes and nulls. The delayed signals are added to the signals from other antennas processed similarly to obtain beams. Four dual-polarization beams are constructed in this fashion, each fully-independent and capable of pointing anywhere in the visible sky. Each beam is subsequently converted to two independent “tunings” of up to  $\approx 16$  MHz bandwidth each, with each tuning having a center frequency independently-selectable from the range 10–

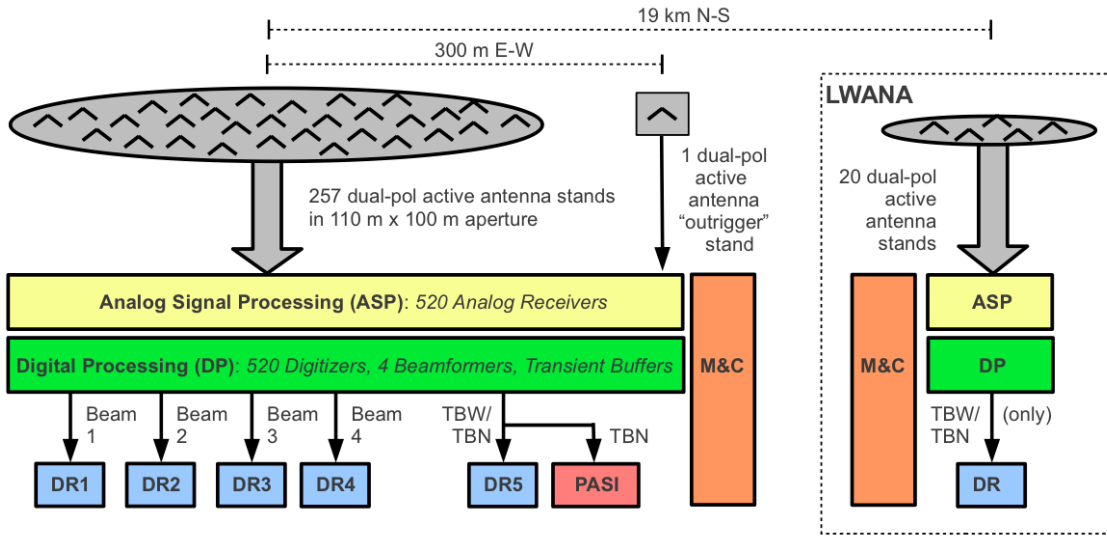


Fig. 12.— LWA1 system architecture, simplified for clarity; details available in Craig (2009).

88 MHz. Both tunings of the beam emerge from DP as a single stream of UDP packets on 10 Gb Ethernet. Thus there is one 10 Gb Ethernet output cable per beam (or “pointing”).

Each beam output is connected to a data recorder, a PC that records the UDP packets to a “data recorder storage unit” (DRSU). A DRSU is five 2 TB drives (10 TB total) in a 1U rack-mountable chassis, configured as an eSATA drive array. Each data recorder can host up to 2 DRSUs. At the maximum beam bandwidth, each data recorder has a capacity of  $\approx 72$  hrs of observation which is continuous except for 1 gap of approximately 5 minutes, needed for the switchover between DRSUs. DRSUs may be either taken from the shelter for analysis, or they may be offloaded onto other DRSUs or commercially-available external USB hard drives. It is also possible to transfer data from data recorders directly off-site using the internet; however the limited data rate of the internet connection to the LWA1 site makes this impractical for observations longer than a few minutes.

Independently of beamforming, and as demonstrated in Figures 2, 3 and 4, LWA1 is able to coherently capture and record the output of all its A/Ds, where each A/D corresponds to one antenna. This can be done in two distinct modes. The “transient buffer – wideband” (TBW) mode allows the raw 12-bit output of the A/Ds to be collected continuously, but only for 61 ms at a time, and another 5 minutes is required to write out the captured samples. The “transient buffer – narrowband” (TBN) mode, in contrast, allows a single tuning of 67 kHz bandwidth to be recorded continuously and indefinitely, resulting in an output data rate of  $\sim 112$  MB/s for the array (which is the maximum that a data recorder can absorb, thus setting the maximum TBN bandwidth). These two modes share the same 10 Gb Ethernet output from DP, and thus are mutually exclusive. However, the TBW/TBN output is distinct from the four beam outputs and runs simultaneously with all four beams using a dedicated (fifth) data recorder and DRSUs. Although intended originally to support commissioning and diagnostic functions, the TBW and

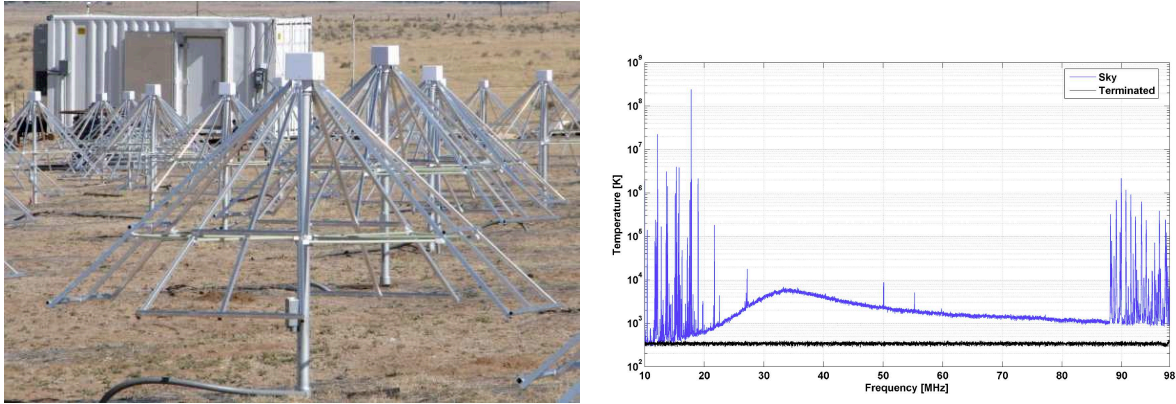


Fig. 13.— LWA1 active antenna. (a) An active antenna “stand”, consisting of two orthogonally-aligned bowtie-type dipoles on a mast, over a  $3\text{ m} \times 3\text{ m}$  ground screen. (b) Output spectrum of one polarization of the active antenna and output with antenna terminals shorted, confirming that the output is sky noise-dominated over most of the 10–88 MHz tuning range.

TBN modes have emerged as popular modes for science observations, as indicated in § 2.

LWA1 includes a dedicated backend known as the Prototype All-Sky Imager (PASI). PASI shares the TBN/TBW output and operates  $\sim 97\%$  of the observatory uptime. PASI is a cluster of 4 rack mounted servers with Nahalem multicore processors interconnected by an Infiniband switch.

Separate from LWA1, we have built the LWA North Arm stub station (LWANA), a separate station located at the end of the VLA’s North Arm (approximately 19 km North of LWA1) primarily using spares left over from the original procurements of components for LWA1. LWANA consists of 20 stands (thus,  $\sim 8\%$  of the collecting area of LWA1) and is capable of TBW and TBN only (not beamforming). However, it is identical to LWA1 in all other respects, including data recording.

**Radio frequency interference (RFI) environment:** As demonstrated in Figures 3, 5, 7, and 13b, the RFI environment at LWA1 is surprisingly benign. The observatory management team has had extensive experience – and consistent success – observing at these frequencies at this site using LWA1, a precursor system (LWDA; Lazio *et al.* 2010), and the VLA 4-m system (Kassim *et al.* 2007a). This is not to say that observing in 10–88 MHz is without challenges. RFI impacts LWA1 on two levels: First, by creating a potential threat to the linearity of the active antennas and analog receivers; and second, by obstructing spectrum of interest. We consider the linearity issue first. At LWA1, the most troublesome interference is due to distant transmitters at frequencies below about 30 MHz, whose signals arrive at the station by refraction from the ionosphere, followed closely by FM broadcast signals in the 88–108 MHz range. These linearity challenges are met using high-intercept point active front end electronics in which we have great confidence (the same design with only minor modifications has been in nearly continuous use at the site since 2006). Also the LWA1 analog receivers (Fig. 14a) can be electronically reconfigured between three modes: A full-bandwidth (10–88 MHz) uniform gain mode (almost always used), a full-bandwidth dual-gain mode in which frequencies below about 40 MHz can be attenuated using a “shelf filter” (useful for observing above 40 MHz during that part of the day when



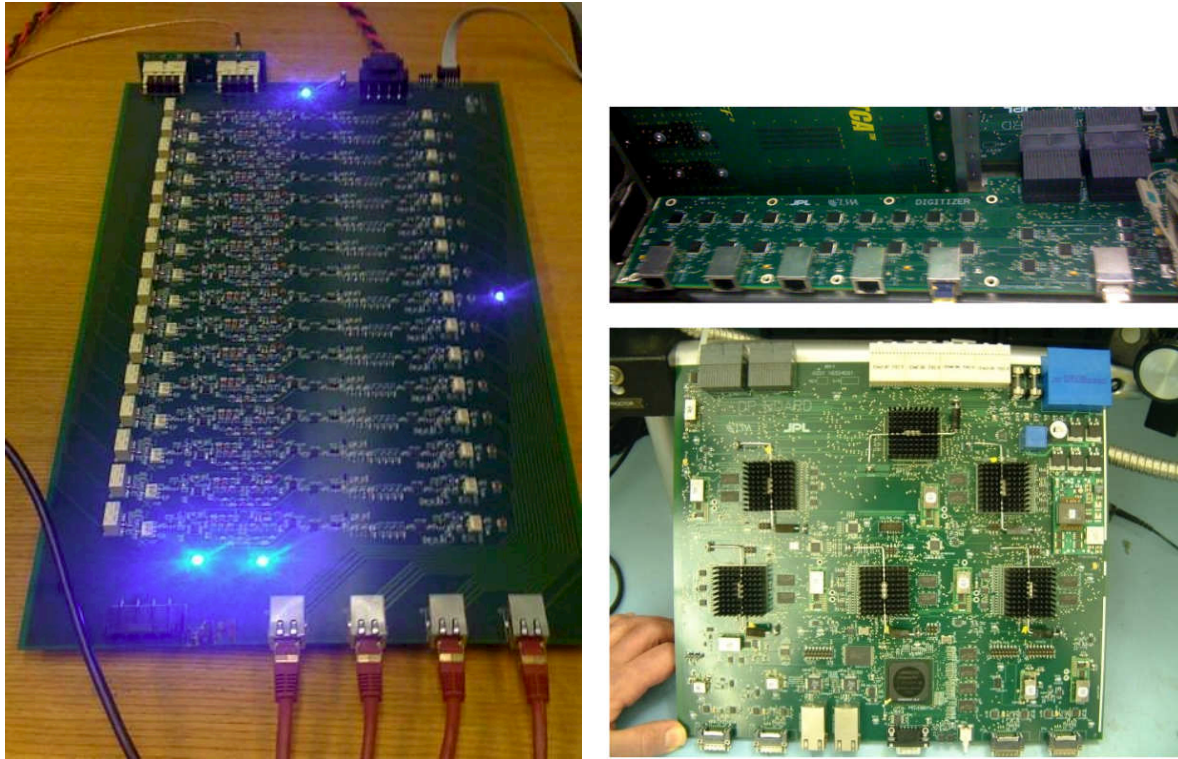


Fig. 14.— Left: One of LWA1’s 33 16-channel analog receiver boards. Top Right: One of the digitizer boards; Bottom Right: One of LWA1’s 26 20-channel “DP1” digital processing boards.

long-range signals in the 10–30 MHz band are strongest); and a 28–54 MHz mode, which would serve as a last line of defense should we find in the future that RFI above and/or below this range becomes persistently linearity-limiting. In addition, the total gain in each bandpass mode can be adjusted over a 60 dB range in 2 dB steps, allowing fine adjustments to optimize the sensitivity-linearity tradeoff.

Concerning the obscuration of science signals from in-band RFI: Our extensive experience in this frequency range (from the 74 MHz VLA system, from LWDA and ETA, and from LWA1 itself) has demonstrated that RFI from both external and internal sources will inevitably be present at all levels and throughout the spectrum. We occasionally encounter bouts of crippling interference, which we inevitably find to be internally-generated or due to activity at the nearby VLA facilities. In each case we have (with the excellent cooperation from the VLA RFI management team) quickly identified and eliminated the source. For the remaining low-level RFI, we find that the simple time & frequency editing techniques currently employed are effective in dealing with interference encountered most of the time. In fact, we typically find that the primary difficulty posed by RFI is not really that it prevents science, but rather that it increases the amount of manual effort required to reduce data, and decreases somewhat the amount of data that is ultimately useful.

We plan a continuing program of technical development aimed at characterizing, expanding and improving the capabilities of LWA1 and, in the process, training students in the art of instru-



ment development and developing the engineering expertise needed to tackle the next generation of large meter-wavelength radio telescopes. The LWA1 (see § 3) is available as a testbed for technical development projects, so that work can proceed with less concern about inadvertently degrading LWA1 with unproven modifications, or limiting its availability to accommodate testing. Technical developments planned include: (1) On-the-fly data processing using the existing data recorders; (2) Flexible scheduling, triggering, and rescheduling of observations; (3) Enhanced and automated techniques for mitigation of RFI; (4) Beams with custom shapes and/or optimized sensitivity; and (5) Improved sidelobe and polarization characterization.

## 4. Observatory Operations

### 4.1. Allocation of Observing Time

LWA1 observing time is allocated in units of “beam-hours” and “TB-hours”. One beam-hour corresponds to the dedicated use of one of LWA1’s four independently-steerable beams for one hour. Similarly, one TB-hour corresponds to the dedicated use of LWA1’s TBW/TBN mode for one hour. Data will be shipped to users on hard drives, or made available on-line through the LWA Data Archive (LDA).

The first LWA1 CFP was conducted in October 2009, and resulted in the time allocations identified in Table 3. CFPs will be issued twice annually. LWA1 also supports “target of opportunity” observing. The Director (or in his absence, the Associate Director or Chief Scientist) is authorized to grant up to 16 beam-hours (sufficient to cover the full tuning range of LWA1 continuously for one pointing, for 4 hours) and 8 TB-hours in response to a well-justified email request from anyone.

Finally, it should be noted that the LDA will provide, in effect, a retroactive observing capability that we will also make available to the community.

### 4.2. The LWA Software Library

The LWA project has developed a suite of software tools for the scheduling and analysis of LWA data (the LWA Software Library – LSL<sup>3</sup>), but we do not have the resources to provide turn-key software solutions for all experiments that could be envisaged. We have established a clearinghouse for LWA Software and this will be available to all users. LSL initially benefited from a software repository developed by NRL for the LWDA, and software development at Virginia Tech. LSL runs under Linux and also on Intel Macs. Currently LSL includes readers for all LWA observing modes, correlators for the TBW and TBN dipole modes, and various scripts to generate plots of antenna locations, spectra, spectrograms, and much, much more. LSL is publicly available from the LWA web pages. For further details see Dowell *et al.* (in preparation).

---

<sup>3</sup><http://fornax.phys.unm.edu/lwa/trac/wiki>

## 5. Conclusions

The LWA1 offers considerable sensitivity and sky coverage in the relatively unexplored frequency range 10 – 88 MHz. The LWA1 is particularly interesting from an education perspective in that the TBN/TBW modes provide one of the first “Large-N” radio telescopes, challenging existing algorithms. Furthermore, there are a number of other low frequency instruments under development (LOFAR, MWA, PAPER) which face similar challenges in RFI mitigation, calibration, and wide-field imaging.

The astronomical community is invited to apply for time on this new facility at one of the upcoming proposal deadlines. Those interested in using this observatory in novel ways should contact N. Kassim or G. Taylor.

### **Acknowledgements:**

We acknowledge the efforts of the following students and postdocs who helped to design or build LWA1: Sunil Danthuluri, Albino Gallardo, Sudipta Ghorai, Aaron Gibson, Eduard Gonzalez, Mahmud Haun, Aaron Kerkhoff, Ted Jaeger, Kyehun Lee, Justin Linford, Qian Liu, Adam Martinez, Frank Schinzel, Abirami Srinivasan, D.W. Taylor III, Chenoa Tremblay, Steve Tremblay, Sushrutha Vigraham, Chris Wolfe, Jayce Dowell, Jake Hartman, Bryan Jacoby, Ted Jaeger, and Nagini Paravastu. Basic research in radio astronomy at the Naval Research Laboratory is supported by 6.1 base funding. GBT acknowledges support from the Lunar University Network for Astrophysics Research (LUNAR) (<http://lunar.colorado.edu>), headquartered at the University of Colorado Boulder, funded by the NLSI via Cooperative Agreement NNA09DB30A. Part of this research was carried out at the Jet Propulsion Laboratory, California Institute of Technology, under a contract with the National Aeronautics and Space Administration.

The LWA1 is supported by the National Science Foundation as a University Radio Observatory under grant xxx.

## REFERENCES

- Balsano, R.J. 1999, PhD thesis, Princeton Univ.
- Benz, A. O., & Paesold, G. 1998, A&A, 329, 61
- Bhat, N.D.R. *et al.* 2007, ApJ, 665, 618
- Blandford, R. D. 1977, MNRAS, 181, 489
- Burns, J. O., Lazio, J., Bale, S., et al. 2012, Advances in Space Research, 49, 433
- Cairns, I. H., & Robinson, P. A. 1999, PRL 82, 3066
- Cameron, P. B. *et al.* 2005, Nature, 434, 1112
- Carr, T. D., Desch, M. D., & Alexander, J. K. 1983, in Physics of the Jovian Magnetosphere, ed. Dessler, A. J. (New York: Cambridge University Press), 226-284
- Clarke, T. 2009, “Scientific Requirements for the Long Wavelength Array”, Memo 159, LWA Memo Series [<http://www.ece.vt.edu/swe/lwa/>]
- Cordes, J. M., & McLaughlin, M. A. 2003, ApJ, 596, 1142
- Craig, J. 2009 “Long Wavelength Array Station Architecture,” Ver. 2.0, Memo 161, LWA Memo Series [<http://www.ece.vt.edu/swe/lwa/>]
- Deshpande, K. B. 2009 *A Dedicated Search for Low Frequency Radio Transient Astrophysical Events using ETA*, M.S. Thesis, Virginia Polytechnic Institute and State University.
- Dessenne, C.A.-C. *et al.* 1996, MNRAS, 281, 977
- Eilek, J., Hankins, T. & Jessner 2005, ASP Conf. Ser. 345, 499
- Ellingson, S.W., Clarke, T.E., Cohen, A. Craig, J., Kassim, N.E., Pihlstrom, Y., Rickard, L. J. & Taylor, G.B. 2009, “The Long Wavelength Array,” Proc. IEEE, Vol. 97, No. 8, pp. 1421-1430
- Ellingson, S.W. 2011, “Sensitivity of Antenna Arrays for Long-Wavelength Radio Astronomy,” *IEEE Trans. Ant. & Prop. in press*. Preprint available as astro-ph/1005.4232.
- Erickson, W.C., McConnell, D., & Anantharamaiah, K.R., 1995, 454, 125
- Furlanetto, S. R., Oh, S. P., & Briggs, F. H. 2006, PhR, 433, 181
- Griessmeier, J., Zarka, P., & Spreuw, H. 2007, A&A, 475, 359
- Hankins, T. 1973, ApJ, 181, L49
- Hansen, B. M. S., & Lyutikov, M. 2001, MNRAS, 322, 695
- Helmboldt, J. F., & Kassim, N. E. 2009, AJ, 138, 838

- Howard, A.W., Marcy, G.W., Johnson, J.A., Fischer, D.A., Wright, J.T., Isaacson, H., Valenti, J.A., Anderson, J., Lin, D.N.C., & Ida, S. 2010, *Science*, 330, 653
- Hyman, S. D., Lazio, T. J. W., Kassim, N. E., Ray, P. S., Markwardt, C. B., & Yusef-Zadeh, F. 2005, *Nature*, 434, 50
- Jacoby, B.A., Lane, W.M., & Lazio, T.J.W. 2007 “Simulated LWA-1 Pulsar Observations” Memo 104, LWA Memo Series [<http://www.ece.vt.edu/swe/lwa/>]
- Kassim, N.E., Perley, R.A., Erickson, W.C., Dwarakanath, K.S. 1993, 106, 2218
- Kassim, N.E., & Erickson, W.C. 1998, *SPIE*, 357, 740
- Kassim, N., Perez, M., Junor, W., Henning, P. (eds.), “From Clark Lake to the Long Wavelength Array: Bill Erickson’s Radio Science”, ASP Conference Series, Vol., 345, 2005 (Astronomical Society of the Pacific, San Francisco).
- Kassim *et al.* 2006, “LWA”1+” Scientific Requirements” Memo 70, LWA Memo Series [<http://www.ece.vt.edu/swe/lwa/>]
- Kassim, N.E. *et al.* 2007a, “The 74 MHz System on the Very Large Array,” *Astrophys. J. Supp. Ser.*, Vol. 172, pp. 686–719.
- Kassim, N.E. *et al.* 2007b, Prospects for LOFAR Observations of the Galactic Center”, in Proceedings of The Galactic Center Workshop 2002: The Central 300 parsecs of the Milky Way, (Eds. Cotera *et al.*, Wiley Online Library).
- Kavic, M., Simonetti, J. H. Cutchin, S. E., Ellingson, S. W. & Patterson, C. D. 2008 “Transient Pulses from Exploding Primordial Black Holes as a Signature of an Extra Dimension,” *J. Cosmology & Astroparticle Physics*, No. 11, 017 <http://stacks.iop.org/1475-7516/2008/i=11/a=017>.
- Lazio, J., Bastian, T., Bryden, G., Farrell, W. M., Griessmeier, J., Hallinan, G., Kasper, J., Kuiper, T., Lecacheux, A., Majid, W., Osten, R., Shkloronik, E., Stevens, I., Winterhalter, D., & Zarka, P. 2009, Astro2010 whitepaper (arXiv:0903.0873)
- Lazio, T.J.W. *et al.* (2010), “Surveying the Dynamic Radio Sky with the Long Wavelength Demonstrator Array,” *AJ*, 140, 1995
- Madau, P., Meiksin, A., & Rees, M. J. 1997, *ApJ*, 475, 429
- Manchester, R. N., Taylor, J. H., & Huguenin, G. R. 1973, *ApJL*, 179, L7
- McLaughlin, M. A., *et al.* 2006, *Nature*, 439, 817
- Obenberger, K. & Dowell, J. 2011 “LWA1 RFI Survey” Memo 183, LWA Memo Series [<http://www.ece.vt.edu/swe/lwa/>]
- de Oliveira-Costa, A., Tegmark, M., Gaensler, B. M., Jonas, J., Landecker, T. L., & Reich, P. 2008, *MNRAS*, 388, 247

- Perley, R.A. & Erickson, W.C. 1984, “A Proposal for a Large, Low Frequency Array Located at the VLA Site”, Memo 1, LWA Memo Series [<http://www.ece.vt.edu/swe/lwa/>]
- Peters, W. M., Lazio, T. J. W., Clarke, T. E., Erickson, W. C., Kassim, N.E. 2011, *A&A*, 525, 128
- Popov, M.V. *et al.* 2006, *Astron. Rep.*, 50, 562
- Pritchard, J. R., & Loeb, A. 2008, *Phys. Rev. D*, 78, 103511
- Pritchard, J. R., & Loeb, A. 2010, *Phys. Rev. D*, 82, 023006
- Ransom, S. M. 2001, Ph.D. Thesis,
- Rees, M. J. 1977, *Nature*, 266, 333
- Rickard L.J. *et al.* 2010 “ The Long Wavelength Array (LWA): A Large HF/VHF Array for Solar Physics, Ionospheric Science, and Solar Radar”, Ground-Based Instrument Paper for the 2010 NRC Decadal Survey of Solar and Space Physics, Memo 173, LWA Memo Series [<http://www.ece.vt.edu/swe/lwa/>]
- Soriano, M., R. Navarro, L. D’Addario, E. Sigman & D. Wang (2011), “Implementation of a Digital Signal Processing Subsystem for a Long Wavelength Array Station,” *Proc. 2011 IEEE Aerospace Conf, Big Sky, MT*. Also available as LWA Memo 179.
- Stepkin, S.V. *et al.* 2007, *MNRAS*, 374. 852
- Stappers, B.W. *et al.* 2011, “Observing Pulsars and Fast Transients with LOFAR,” [astro-ph/1104.1577](http://arxiv.org/abs/1104.1577).
- Ulyanov, O. M., Zakharenko, V. V., Konovalenko, A. A., Lecacheux, A., Rosolen, C., & Rucker, H. O. 2006, *IAU Joint Discussion*, 2,
- Vachaspati, T. 2008, *Physical Review Letters*, 101, 141301
- de Vos, M., A.W. Gunst & R. Nijboer 2009, “The LOFAR Telescope: System Architecture and Signal Processing,” *Proc. IEEE*, 97, 1431.
- Walmsley, M., & Watson, W.D., 1982, *ApJ*, 260, 317
- Wijnholds, S.J. & W, A. van Cappellen 2011, “In Situ Antenna Performance Evaluation of the LOFAR Phased Array Radio Telescope,” *IEEE Trans. Ant. & Prop.*, in press.
- York, J. *et al.* 2007 “The LWDA Array: An Overview of the Design, Layout and Initial Results” Memo 93, LWA Memo Series [<http://www.ece.vt.edu/swe/lwa/>]
- Zarka, P. 2007, *Planet. Space Sci.*, 55, 598