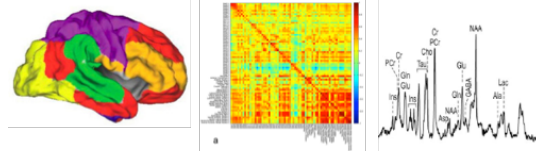


FALL 2019

**Advanced Topic**  
**Magnetic Resonance Imaging and Spectroscopy**

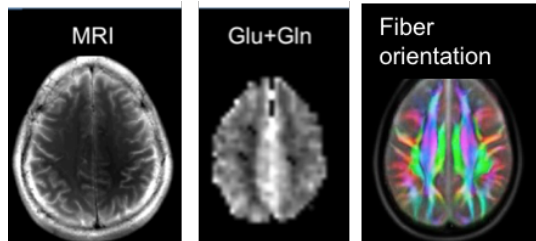
• **Where?**

- Lectures: UNM Health Sciences Education Building - Domenici North Wing room 2706
- Lab Course: ABQMR, UNM Health Sciences Center, Mind Research Network



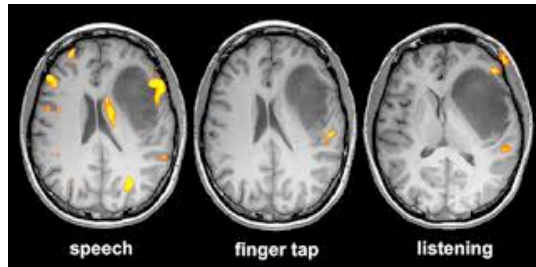
• **When?**

- Mondays: 4:15 - 5:30 pm (lectures)
- Thursdays: 4:15 - 5:30 pm (labs)



• **What?**

- This interdisciplinary course introduces the physics and engineering aspects of magnetic resonance imaging (MRI) and magnetic resonance spectroscopy (MRS)
- The course provides an overview of MR research in laboratories at UNM, MRN, ABQMR and Los Alamos.



• **Why?**

- Pursue a PhD in biomedical MRI research
- Start a research career in MRI methodology and clinical and neuroscience research.
- Work with laboratories nationwide and internationally

• **Course registrations**

PHYC 480-006 -- ECE495-003 – CS491-008 – CBE499-005 - NE499-004  
PHYC 581-006 -- ECE595-002 – CS591-010 – BME598-004 – NE515-007



SCHOOL OF  
MEDICINE  
DEPARTMENT OF NEUROLOGY

**Stefan Posse, PhD**

Professor

Neurology, and Physics and Astronomy

Human MR Imaging Laboratory

Department of Neurology

University of New Mexico School of Medicine